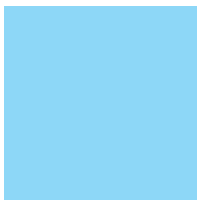


**LSHTM@  
iHEA2017**



**LONDON  
SCHOOL of  
HYGIENE  
& TROPICAL  
MEDICINE**



Follow us on twitter  
**@HealthEconLSHTM**

Health economists from the London School of Hygiene & Tropical Medicine are excited to present at the 12th World Congress in Health Economics - iHEA 2017.

Learn more about our work at:

<https://www.lshtm.ac.uk/health-economics>



## SUNDAY 9 JULY

### Introducing a reference case for global health costing

Organised session

11:45 - 1:15, HAR - 408, #285758

### The current state of costing guidance in low- and middle-income countries: a survey and bibliometric review

Sedona Sweeney, Carol Levin, Ben Herzel, Lori Bollinger, Willyanne DeCormier, Stephen Forsythe, Anna Vassall

### A reference case for global health costing

Anna Vassall

### What do policy-makers want to know? Lessons learned on the use of economic evaluation evidence for priority-setting and programming in low and middle-income countries

Organised session

11:45 – 1:15, HAR – 310, #285696

### Relating costs to outcomes to shed light on unintended effects and inform policy in Tanzania: a case study of payment for performance in Tanzania

Josephine Borghi

### Understanding the barriers and enablers to pooling health and non-health budgets to co-finance interventions with multi-sectoral benefits: the case of Tanzania

Michelle Remme

### Improving methods for handling uncertainty in budget impact analysis

Leonardo Arregoces

### Incorporating demand- and supply-side constraints in economic evaluations of new technologies: lessons for scale-up

Organised session chaired by Carol Levin

2:45 – 4:15, HAR-310, #285672

### Conceptualizing interventions and their costs in analyses of effectiveness and cost-effectiveness

Catherine Pitt, Anna Vassall, Kara Hanson

### Spending to Alleviate Demand Constraints Lowers Unit Costs: A cost-effectiveness analysis of voluntary medical male circumcision to prevent HIV in Tanzania

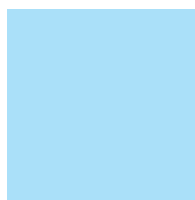
S. Torres-Rueda, H.A. Weiss, M. Wambura, H. Mahler, K. Kripke, J. Chilongani, E. Kuringe, R. Hayes, M. Plotkin, M. Makokha, A. Hellar, C. Schutte, G. Mshana, N. Larke, G. Lija, J. Chagalucha, J.M. Grund, F. Terris-Prestholt

### Defining supply-side constraints to the scale-up of pre-exposure prophylaxis of HIV: the role of costing within demonstration studies

Gabriela B. Gomez, Sedona Sweeney, Robyn Eakle, WD Francois Venter, Anna Vassall, Helen Rees



# LSHTM@ IHEA2017



LONDON  
SCHOOL of  
HYGIENE  
& TROPICAL  
MEDICINE



## SUNDAY 9 JULY

**Wellbeing as an outcome measure in policy evaluation: evidence from UK, South Africa and Malawi**

Special invited session

2:45 – 4:15, HAR-406, #285722

**The Meaning of Wellbeing and its Structure: an Exploratory Analysis of Evidence from Poor South African Women**

Giulia Ferrari

**Subjective wellbeing and capabilities for the evaluation of public health programmes in Malawi: evidence from the Women's Capabilities Index**

Giulia Greco

**Information and the demand for preventative healthcare: a randomised controlled trial of improving household perceptions on the efficacy of immunisation in Uttar Pradesh, India**

Individual abstract: Camilla Fabbri

Session: Experiments in health economics

2:45 – 4:15, HAR-208, #285579

**Anal cancer in men who have sex with men (MSM) living with HIV**

Individual abstract: Jason Ong

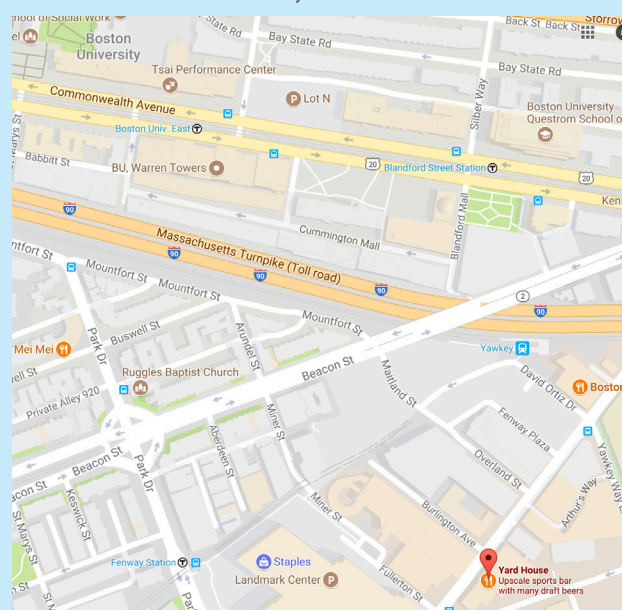
Session: HIV

2:45 – 4:15, HAR-211, #280650

## LSHTM Alumni event

Sunday 9 July, 6-8pm

**Yard House, 126 Brookline Avenue, Boston,  
MA 02215, United States**



## MONDAY 10 JULY

**Cost-effectiveness stars: An alternative method for communicating and interpreting one-way sensitivity analyses in economic evaluations**

Individual abstract: David Bath

Session: Methods in the evaluation of interventions

8:00 – 9:30, HAR-310, #285632

**Demand for hospital-based delivery care in China: Have government policies increased utilisation among poor and ethnic minority populations?**

Individual abstract: Melisa Martinez-Alvarez

Session: Care delivery settings

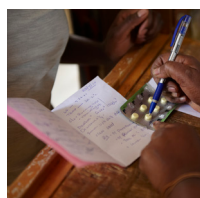
8:00 – 9:30, HAR-304, #284219

**Impact evaluation of the registration policy for female sex workers in Senegal**

Individual abstract: Aurélia Lépine

Session: Health Production – Policy Evaluation

8:00 – 9:30, HAR-404, #263402



**LSHTM@  
IHEA2017**



**LONDON  
SCHOOL of  
HYGIENE  
& TROPICAL  
MEDICINE**



## MONDAY 10 JULY

---

### **The impact of current demand and supply financing policies on maternal and child healthcare provision and utilisation in Western rural China: Evidence from three in-depth case studies**

Individual abstract: Yuan Huang  
Session: Insurance and Financing  
8:00 – 9:30, HAR-220, #284136

---

### **Competition and kickbacks - understanding the nature of competition facing private sector providers of delivery care in Uttar Pradesh, India**

Individual abstract: Catherine Goodman  
Session: Physician competition  
11:45 - 1:15, HAR-426, #286143

---

### **Sex, infection and choices: Stated preferences for preventing HIV and other sexually-transmitted infections in high- and low-income countries**

Organised session chaired by Mylene Lagarde  
11:45 – 1:15, HAR-222, #282586

---

### **One size will not fit all: Divergent stated preferences for new antiretroviral-based HIV prevention products across adults, adolescents and female sex workers in South Africa**

Matthew Quaife, Robyn Eakle, Maria Cabrera, Peter Vickerman, Sinead Delany-Moretlwe, Fern Terris-Prestholt

---

### **Informing targeted HIV self-testing service delivery in Malawi and Zambia – A multi-country discrete choice experiment**

Marc d'Elbée, Pitchaya Indravudh, Lawrence Mwenge, Bernadette Hensen, Melissa Neuman, Augustine Choko, Agness Muzumara, Musonda Simwinga, Cheryl Johnson, Karin Hatzold, Liz Corbett, Fern Terris-Prestholt

---

### **Assessing the preferences of men who have sex with men for HIV self-testing. A pilot discrete choice experiment in a high income country**

Alec Miners

---

### **Can social franchising deliver sustainable and equitable public health programmes in low and middle income countries? Empirical evidence and methodological opportunities**

Organised session chaired by Kara Hanson  
2:45 -4:15, HAR-324, #284552

---

### **How far can a social franchise cover its costs? An economic analysis of three maternal healthcare franchises in Uganda and India**

Fred Matovu, Manon Haemmerli, Andreia Santos, Alex Aligaa, Catherine Goodman

---

### **Using DCEs to improve equity in access to socially marketed HIV prevention products in South Africa**

Fern Terris-Prestholt, Matthew Quaife, Katharine Kripke, Catherine MacPhail, Kara Hanson

---

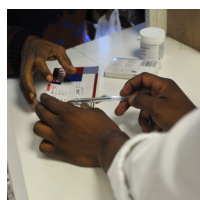
### **How equitable is social franchising? A case study of three maternal healthcare franchises in Uganda and India**

Manon Haemmerli, Andreia Santos, Loveday Penn-Kekana, Fred Matovu, Isabelle Lange, Lenka Benova, Kerry Wong, Alex Aligaa, Catherine Goodman

---

### **Transforming health systems financing: making sure the poor are not left behind**

Organised session chaired by Anne Mills with Augustine Asante, John Ataguba, Josephine Borghi, Por Ir, Virginia Wiseman  
11:45- 1:15, SCI-109, #286371



**LSHTM@  
IHEA2017**



**LONDON  
SCHOOL of  
HYGIENE  
& TROPICAL  
MEDICINE**



## **TUESDAY 11 JULY**

---

### **Re-tooling cost-effectiveness analysis for global health policy relevance: toward a science of comparative strategy evaluation**

Organised session chaired by Anna Vassall and J Salomon

8:00 – 9:30, HAR-306, #285758

### **Incorporating constraints in resource allocation for infectious diseases: a case study of the cost-effectiveness of tuberculosis control interventions in South Africa**

Fiammetta M. Bozzani, Tom Sumner, Don Mudzengi, Gabriela B. Gomez, Piotr Hippner, Salome Charalambous, Richard G. White, Anna Vassall

---

### **Setting priorities for Universal Health Care in low and middle income countries: Findings from the Disease Control Priorities project**

Organised session with Susan Horton and Anne Mills

8:00 – 9:30, SCI-109, #285114

### **Setting Priorities for Universal Health Care: Disease Control Priorities in the context of other health prioritization endeavors**

Anne Mills

### **Economic evidence to support priority setting in health**

Susan Horton

### **Intersectoral policy priorities for health**

Rachel Nugent

### **Universal health coverage and essential packages of care**

David Watkins

---

### **Do, and how do, soda taxes work?**

Organised session by Laura Cornelsen; Chair Richard Smith

8:00 – 9:30, Trustee ballroom, #285582

### **The Pass-Through of Soda Taxes to Retail Prices in Berkeley and Philadelphia**

John Cawley and David Frisvold

### **Sales impact of a levy on sugar-sweetened beverages in restaurant settings: interrupted time-series analysis**

Laura Cornelsen, Steven Cummins, et al.

### **What is the impact on alcohol purchases of increasing the price of sugary drinks?**

Richard Smith

### **Impact of sugar-sweetened drinks tax on prices and consumption in Catalonia**

Judit Vall Castello

---

### **How strategic purchasing can improve health care service quality – lessons from six counties in Asia and Africa**

Individual abstract: Ayako Honda (RESYST)

Session: Purchasing

8:00 – 9:30, HAR-326, #284966

---

### **Does provider performance impact patient trust? Evidence from a trust survey, a trust game and standardised patients**

Individual abstract: Roxanne Kovacs

Session: Micro-economic evaluation at treatment level

10 -11:30, HAR-404, #283857