



Energy and Carbon Management Plan

Summary, 2025



A message from the Director

Since the launch of our Energy and Carbon Management Plan (ECMP) in 2020, the devastating impacts of climate change have intensified across the globe, leading to ever more pressing public health challenges. We must redouble our efforts to achieve Net Zero as early as possible.

This milestone review of our EMCP has enabled us to review progress made thus far, and to put in place new initiatives that will help us achieve deep emission reductions.

In the past six years, improvements to our estate have reduced energy-related emissions by 40%. Similarly, we have reduced our work-travel emissions by 44%, through concerted efforts from colleagues across our School. The review highlighted the success of the Sustainable Climate Impact Fund (SCIF) and how its work complements our Net Zero aspirations. Nonetheless, the review also

emphasises the challenges we face in reducing our supply chain emissions, which remain high, and sets out actions and procedures that enable us to progress quicker to achieve our Net Zero goal.

Climate change and its impact on human health is the defining issue of our time. An enduring commitment to environmental sustainability is at the core of our mission at LSHTM; a commitment which can only be met through collective effort. A huge thanks to everyone at LSHTM for your contributions to the progress we have made thus far. The continued support and enthusiasm of our community of staff and students is essential for the journey ahead.

Professor Liam Smeeth

*Director, London School of
Hygiene & Tropical Medicine*

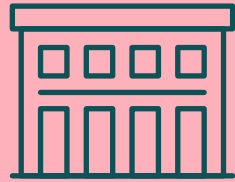


Success to date

Since our 2019 Energy and Carbon Management Plan

17%

reduction in overall CO₂e



40%

reduction in CO₂e from Estates and Labs



44%

reduction in CO₂e from work-related travel

At Keppel Street



28%

reduction in electricity consumption



43%

reduction in fossil fuel consumption



54%

reduction in water consumption

32%

reduction in kilometres flown



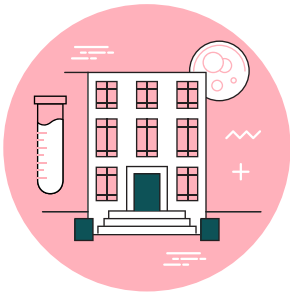
Ranked

33rd

out of 149 UK universities in the 2023/24 People & Planet 'Green league table' results.

Our carbon footprint

The emissions included in our Net Zero ambition can be categorised into three main areas:



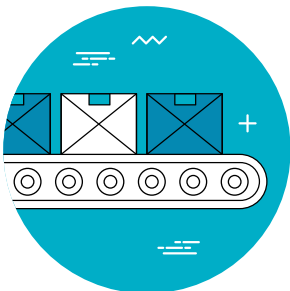
Estate and labs

Onsite emissions from our London campus. This includes our energy consumption, water use and disposal of waste.



Work-related travel

Travel emissions associated with LSHTM work trips, including those undertaken within research projects.

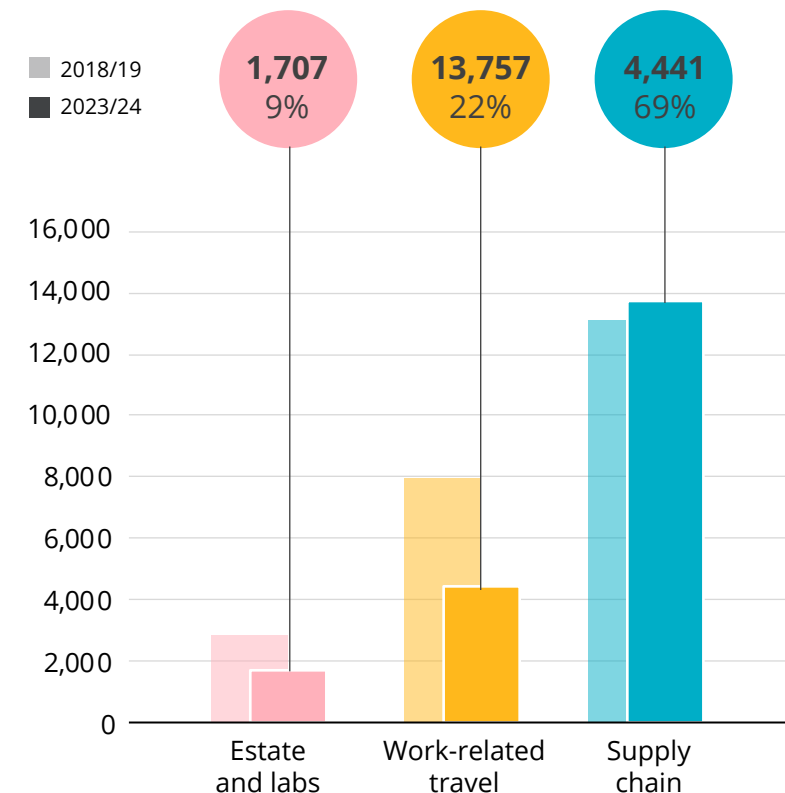


Supply chain

Emissions associated with the goods and services we purchase through central funds to facilitate our work. This includes IT equipment and construction services, including our capital works programme of Keppel Street and Tavistock Place.

Our carbon footprint provides a tangible measure of our progress. From a baseline of 23,944 tCO₂e in 2018/19, we have reduced our emissions to 19,906 tCO₂e in 2023/24, a

17% decrease

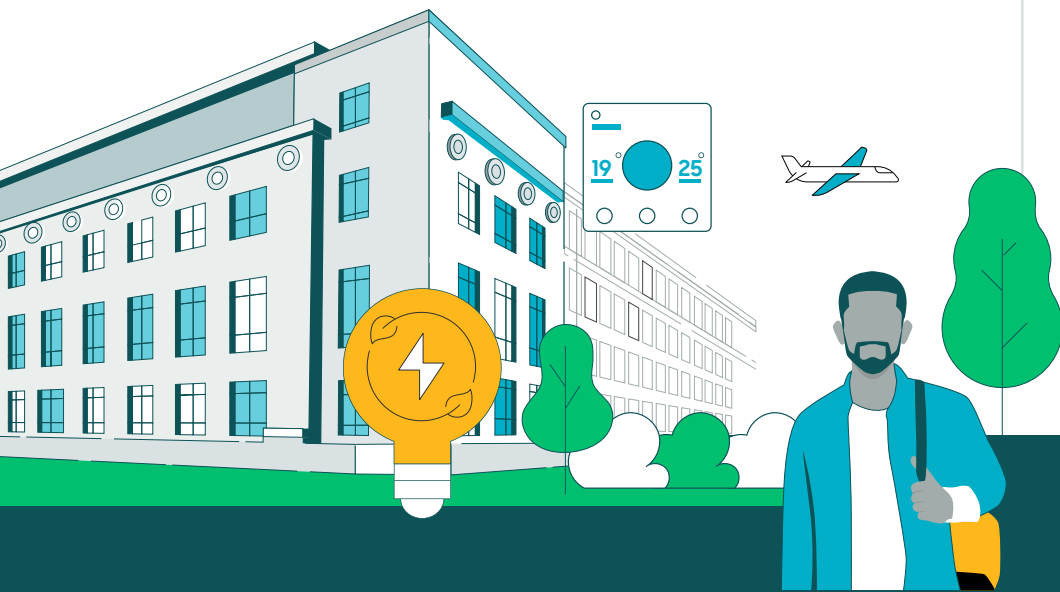


Our carbon footprint

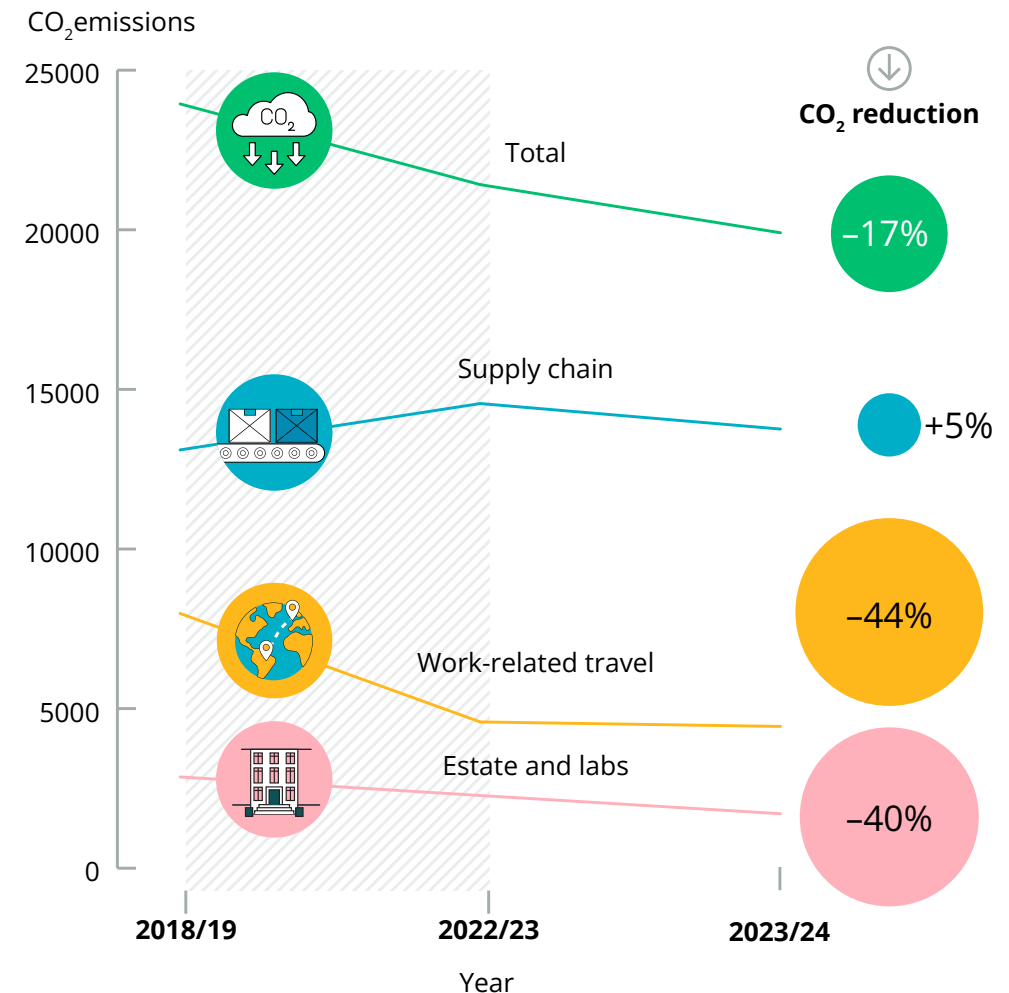
Emission reductions have been driven by a 40.4% reduction in emissions from our estate, following refurbishment works at Tavistock Place 2 and energy efficiency works at Keppel Street.

There has also been a 44% reduction in work-related travel emissions owing to our collective response to COVID-19 and a reduction in work-related travel.

Supply chain emissions make up 69% of our overall footprint and we have seen a 3.7% increase in supply chain emissions since 2018/19, largely due to capital works and changes in national benchmarks.



LSHTM emissions tCO2e % change relative to baseline



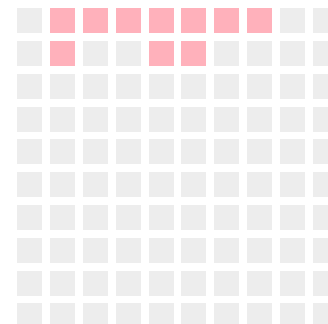
Our approach to Net Zero

We have aligned our approach to Net Zero with the Science Based Targets initiative (SBTi). We have committed to a 90% reduction in emissions from our estates and labs by 2030, and a 50% reduction in emissions from work-related travel and our supply chain by the same year. The target date for achieving a full 90% reduction in these latter categories will be determined by 2028.

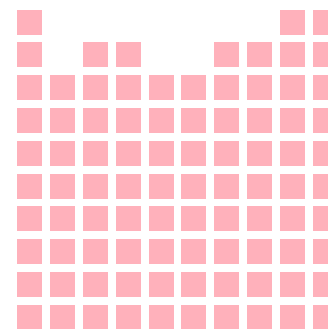
To address unavoidable residual emissions, we have developed the Sustainable Climate Impact Fund, which supports Gold Standard-certified offsetting projects that align with our mission.



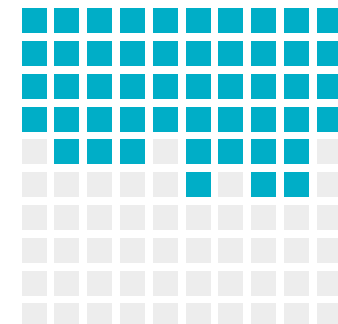
Emissions from Estates and labs



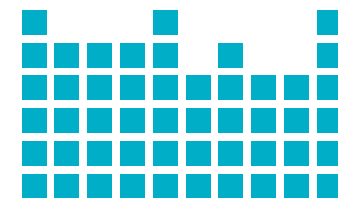
-90%
by 2030



Emissions from work-related travel and supply chain

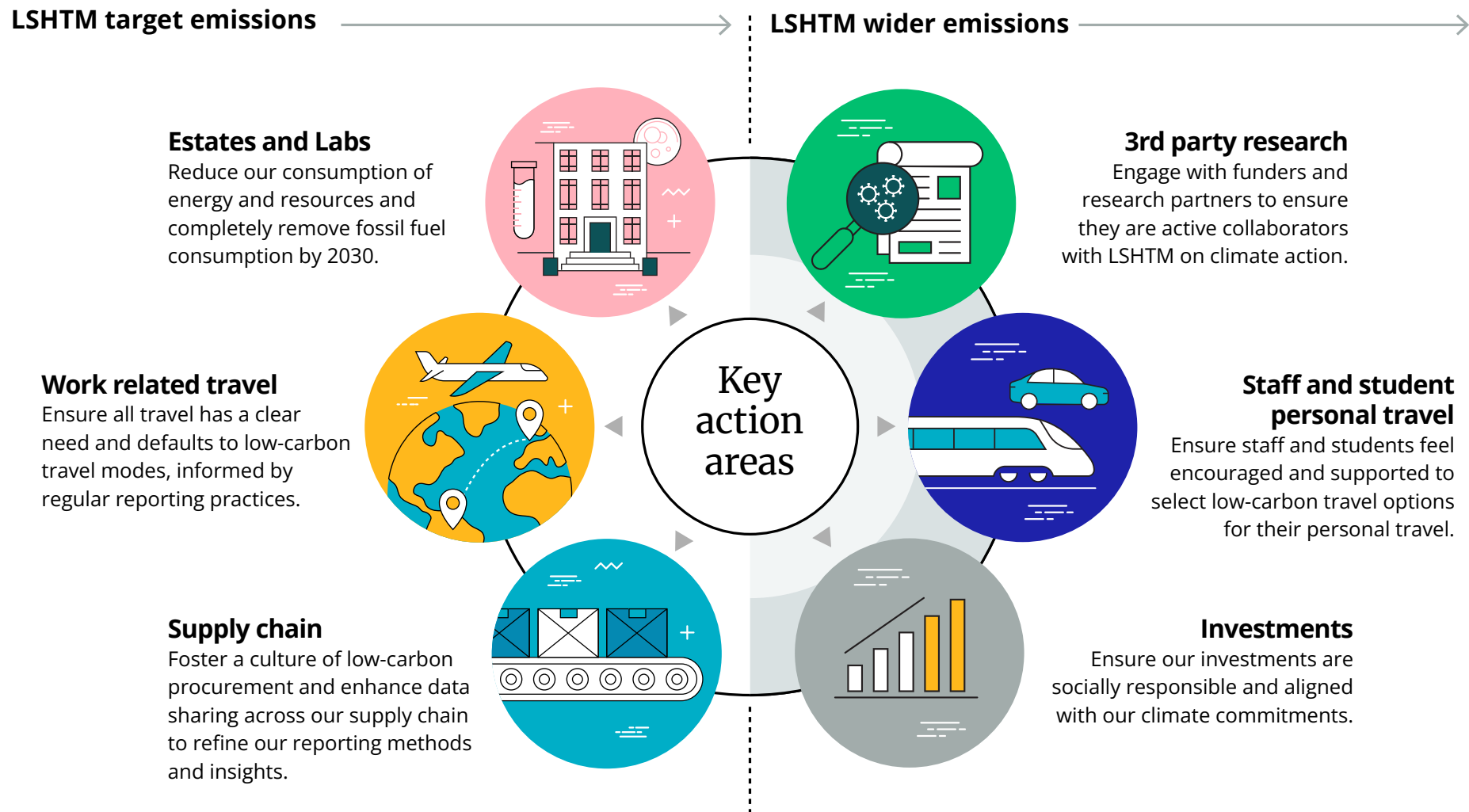


-50%
by 2030



Action towards Net Zero

This ECMP identifies several initiatives to manage and reduce our emissions and make LSHTM more climate resilient. The full list of initiatives can be found on the LSHTM website¹.

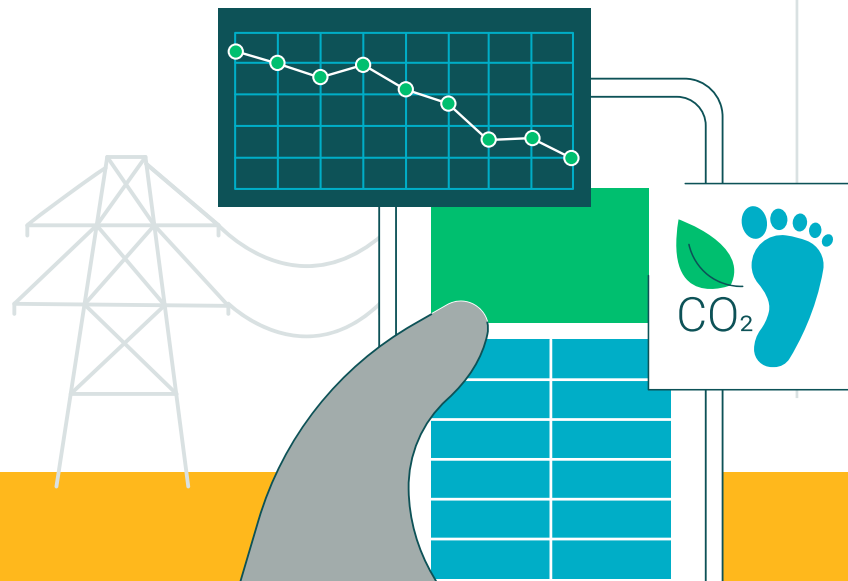


¹<https://www.lshtm.ac.uk/aboutus/sustainability/net-zero-2030>

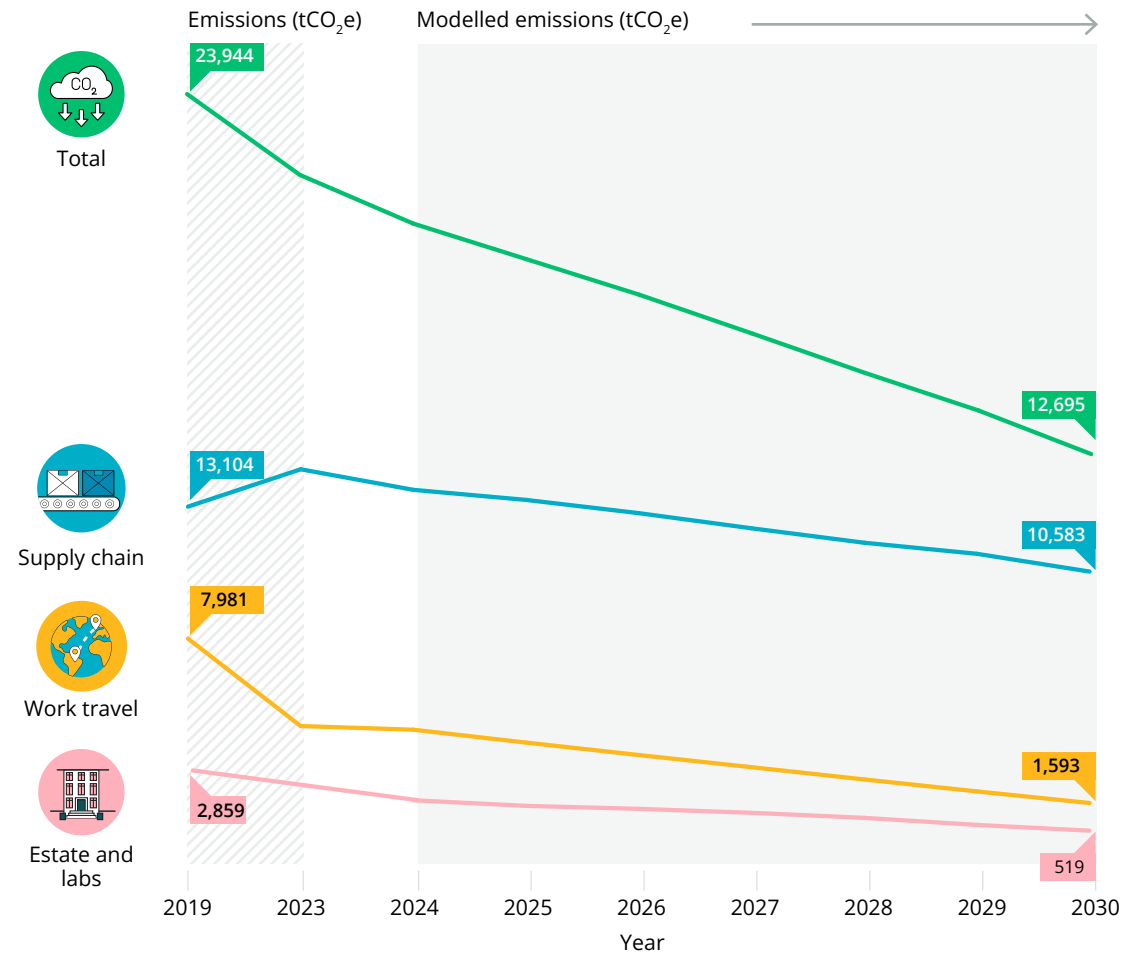
Action towards Net Zero

Modelling indicates that our decarbonisation goals for 2030 are within reach. Nonetheless, it emphasises the ambitious nature of these targets and the necessity for effective implementation of the initiatives detailed in our ECMP. Achieving this will depend on broad support and commitment to these initiatives, as well as a focused effort to convert this plan into reality.

Additionally, it underscores the connection between our activities and the wider economy. For instance, to reduce emissions by 90% from estates and labs, LSHTM must move away from fossil fuels, while the UK Government must deliver the Clean Power 2030 Action Plan.



Net zero target projection, by emission category



Delivering action

Our governance structure is led by the Sustainability Action Committee (SAC), chaired by our Chief Operating Officer. The SAC is responsible for monitoring key performance indicators, reporting to our Executive Team and driving the implementation of our ECMP. We are mindful of the challenges ahead, including the need to balance our Net Zero ambition with our core mission, manage dependencies on national infrastructure and policy, and address funding constraints following the 2025 UK government Spending Review.

Nevertheless, we remain resolute in our commitment to embedding sustainability into our decision-making processes and securing the resources necessary to meet our climate commitments.





Get involved

For more information, read our full ECMP and initiatives on our website.

Reach out to the sustainability team at sustainability@lshtm.ac.uk.

