

Researching Gender-Based Violence: Methods and Meaning



Background

Gender-based violence is prevalent globally. It occurs in many forms, including intimate partner violence, rape and coerced sex, child sexual abuse, and human trafficking. Such forms of gender-based violence are a significant risk factor for poor health, impacting on individuals' physical, sexual and psychological health, as well as their social and economic well-being. Evidence from rigorously conducted research is essential to ensuring that policies and services to prevent and respond to violence are well-designed and appropriate to the context where women and men live. Yet, conducting action-oriented research on gender-based violence that is robust and carried out in ethical and safe ways requires specific approaches.

The course

This course aims to strengthen participants' knowledge and skills to conduct or commission technically rigorous, ethical and policy- and service-relevant research on various forms of violence against women.

This specialised course focuses on methods to research gender based violence. Participants are expected to have some prior familiarity or experience with conducting research, and relevant knowledge about gender based violence.

Teaching methods

The course will be taught through a series of interactive lectures, practical exercises; group work and assigned reading.

Aims & objectives

Upon completing the course, participants will have a strong understanding of: current gold standard methods to conceptualise and measure violence exposures, various methodological techniques for assessing the relationship between violence and health outcomes; and practical issues faced when meeting ethical and safety obligations.

Course content

The course will cover the following topics:

- Conceptualising and researching various forms of gender-based violence.
- Associations between violence and health: current knowledge.
- Ethics and safety.
- Approaches to researching violence: qualitative, quantitative, mixed methods, intervention research.
- Developing conceptual frameworks for violence and health research.
- Survey research on violence and questionnaire design.
- Special circumstances and practical tips for specific contexts.
- Intervention research: approaches and challenges.
- Violence research in health care settings.
- Practical planning and budgeting for studies on violence

Who should apply?

The course is intended for individuals who will conduct or commission research on gender-based violence, particularly those who want to add a 'violence component' to a study that is quantitative or qualitative, or an intervention evaluation. It is relevant for those working on health-related topics such as, sexual and reproductive health, maternal health, HIV, mental health and substance use.

Accommodation & meals

A list of hotels and other accommodation located in the vicinity of the School can be supplied on request to the Registry. Lunch can be purchased from the School's Refectory in the Keppel Street building or the cafe on the Tavistock Place building. Evening meals are not catered for at the School, but there is a large choice of restaurants, cafes and shops nearby.

Visas

The student is responsible for obtaining any visa or other permissions to attend the course, and is encouraged to start the application process as early as possible as obtaining a visa for the UK can sometimes take a long time. The Short Courses team, in the Registry, can provide supporting documentation if requested.

The course organisers

The teaching staff are experts in the evaluation of complex social interventions to prevent violence, using rigorous, cutting-edge evaluation methods, including randomised controlled trials. They are committed to using their research and strong global partnerships to inform policies and interventions that promote reductions in gender-based violence.

Key information



Course organisers:

Dr. Karen Devries & Dr. Nambusi Kyegombe. The course will also feature lectures by Professor Charlotte Watts, Professor Lori Heise and Professor Cathy Zimmerman, amongst others.



Fees for 2020:

£1,809



Contact email:

shortcourses@lshtm.ac.uk



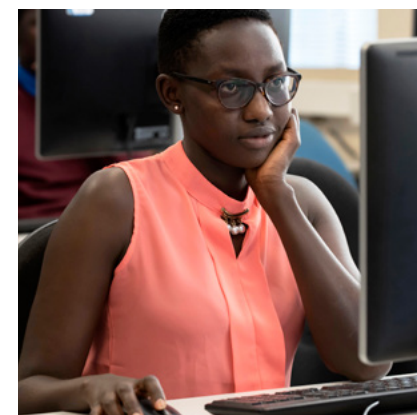
Find out more and apply:

www.lshtm.ac.uk/study/courses/short-courses/gender-violence



The London School of Hygiene & Tropical Medicine is highly ranked in a number of university league tables. In May 2019, it ranked top UK University for open access and gender diversity in research (CWTS Leiden tanking) and in 2017, it was named first in Europe for research impact in sciences (CWTS Leiden Ranking). It also received a prestigious Queen's Anniversary Prize for Higher and Further Education in 2017. In 2016, it won the Times Higher Education 'University of the Year' award.

Our mission is to improve health and health equity in the UK and worldwide; working in partnership to achieve excellence in public and global health research, education and translation of knowledge into policy and practice.



Our short, post-experience and specifically designed short courses provide the opportunity for intensive study in specialised topics. These courses are ideal if you want to refresh your skills and keep in touch with the latest research and knowledge in public and global health.

Contact details

Registry
London School of Hygiene & Tropical Medicine
Keppel Street
London WC1E 7HT
United Kingdom

Tel: +44 (0)20 7299 4646

Email: shortcourses@lshtm.ac.uk

