

London School of Hygiene & Tropical Medicine

Improving Health Worldwide

LONDON
SCHOOL of
HYGIENE
& TROPICAL
MEDICINE





International Students Welcome

20 & 21 September 2018

LONDON
SCHOOL of
HYGIENE
& TROPICAL
MEDICINE



- Welcome to those joining us today!
- Copies of schedule in your packs
- Most presentations will be available soon if not already: *go to home page and search International Students Welcome*

Free wi-fi access

Find the network: **lshtm-conf**

Password: **jameslind**



To activate: open a browser and enter an email address

Available in the Keppel Street building

Until Monday 2nd October

Next week: your network log-in will give access to *Eduroam* wireless network

No smartphone / laptop / tablet? Computers in
Accommodation Helpdesk (priority to those
looking for accommodation)

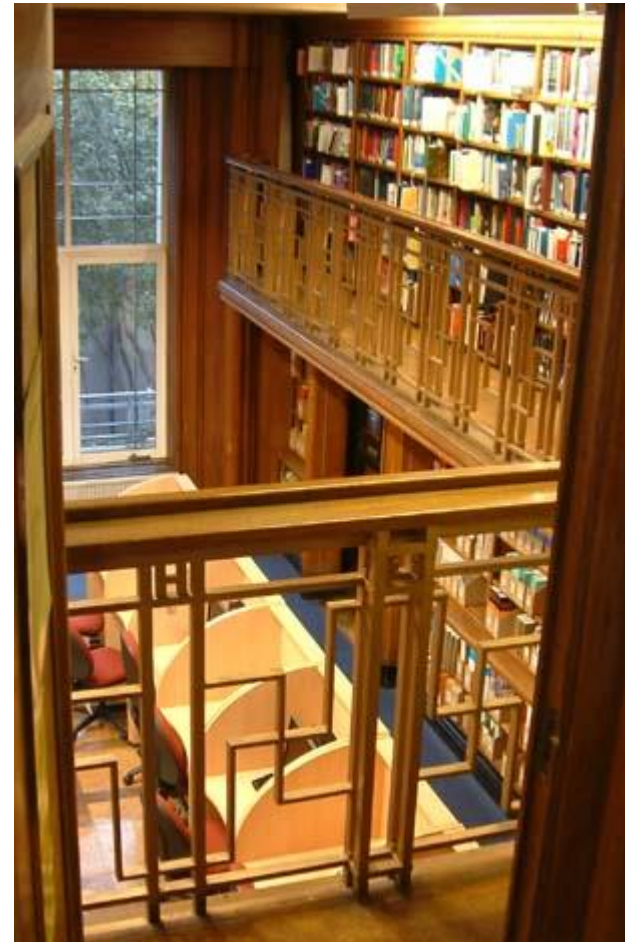
- **Building tours** (13:45 and 16:30, please sign up in advance)
- **New: movie!**
- **Tonight: Pub Quiz (in Pumphandle bar & Refectory)** 17:15 – 19:15
- **Sunday Walk** (14:00; meet 13:45)
- During free time: check out our Things To Do handout

Building Access

- Before Monday, limited access (wear your ISW badge)
- You **can** access: Finance, Refectory, Common Room, Accommodation Helpdesk (and WCs!)
- Photo ID cards issued from next week which give full access

Tours (at 13:45 and 16:30)

- Brief introduction to the School's history and architecture
- Sign up in advance
- Meet on main steps in your groups
- You'll be introduced to teaching space next week
- If you are in Tour Group 3 (13:45) please go to lunch first!



During free time

During gaps in the ISW schedule (e.g. after lunch) then check our **“things to do locally handout”** in your packs.

Or...

Movie: Friday

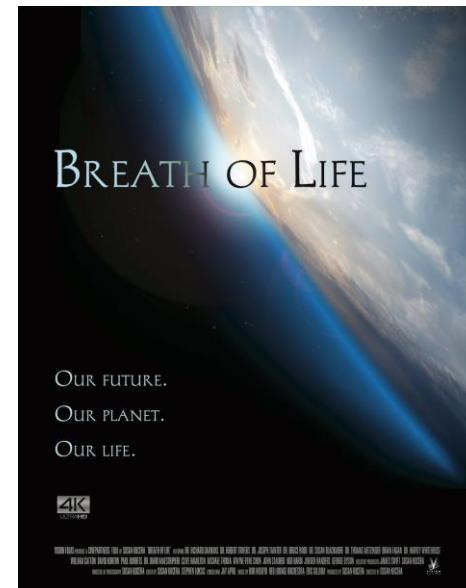
Friday (today) at 14:45

Breath of Life

(82 minutes)

John Snow Lecture Theatre

Filmed in Europe, Scandinavia, North America and Hawaii the film features breath-taking cinematography and insightful commentary from the world's greatest evolutionary biologists and psychologists — but it is the common sense of farmers in the drought-stricken western United States and the wisdom of Hawaiians from the most isolated place on the planet that show us the way back to a more honest and authentic relationship with the world and reality.



Pub quiz

- **Tonight 17:15 – 19:15**
- **In the Refectory (lower ground floor)**
- **Put your general knowledge to the test**
- ****Prizes to be won!****

- **Hosted by Mphatso and Asad (MSc 2017-18)**



Sunday walking tour (2 – 4 pm)



Join us for a **guided walking tour** of the area surrounding the School, known as Bloomsbury.



The **2-hour walk** (5 separate groups) will cover several of the area's iconic garden squares, and will introduce you to some fascinating local history.

Come with **comfy shoes and an umbrella , rain gear!**



So that we can manage group size, the walk is open to LSHTM students only (no friends and family, sorry).



If you still need a place to live:

Visit the Accommodation Helpdesk

- Open 12-5 pm Thurs 19th – Weds 26th September (not Sat / Sun)
- Based in the e-library in Keppel Street building
- After Wednesday 26th, please contact studentadvice@lshtm.ac.uk for accommodation queries and advice



Dates for your diary



Friday 29th September 12:00 – 16:00

Student Central (Malet Street)

**Freshers Fair: freebies, clubs & societies, free
Vietnamese street food, gym class demos and more**



Tuesday 25th September 17:30 – 19:00

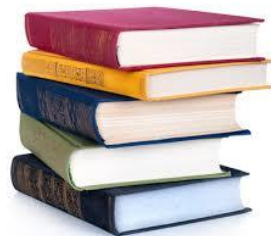
John Snow Lecture Theatre (booking required: see LSHTM website)

**Panel Discussion: Human Rights in Global Health:
Rights-Based Governance for a Globalizing World**



Monday 5th - Friday 9th November

Reading Week!



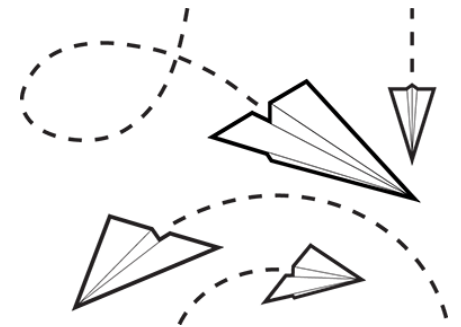
Your turn!

Find the coloured paper in your pack, and write:

1. Something you've noticed since arriving in London that seems odd / surprising
2. Something you can bring from your home culture that will help you through your time in London
3. Something fun you're hoping to do this weekend

Feel free to write more than one answer for each!

- Now make a paper plane!!
- Wait for our signal to throw your plane
- We'll ask some of you to share with the group



Something you've noticed since arriving in London that seems odd / surprising:

- *Brits don't laugh*
- *People have diverse fashion sense, some of it very radical and shocking*
- *People are so polite but they're a little awkward, it's cute*
- *Majority of people find it strange when you greet them on the street (people you don't know)*
- *Gay couples kissing on the streets*
- *It has been sunny*
- *A lot of very intense people walking very fast and looking down at their phones*

- London is one of the most multicultural cities in the world
- Enriching and challenging in equal measure
- Equality Act (2010) makes discrimination against various groups unlawful (gender, sexual orientation, age, religion to name but a few)
- School-wide session next week (Wednesday)

Something you can keep hold of from your home culture that will help you through your time in London:

- *Making / cooking food to give to my classmates and friends*
- *As a Canadian, I will probably be apologizing for no apparent reason*
- *Chocolate*
- *Chill California vibe*
- *Noodles... lots of noodles*
- *The beach towel that is in colours of the Bahamas flag*
- *Faith*

Previous paper planes answers

Something you'd like to do this weekend (fun or relaxing, please!):

- *Go to the flower market to get some flowers to brighten up the new flat*
- *Party party party*
- *Go to the Tate Modern*