



International Students Welcome

20 & 21 September 2018

LONDON
SCHOOL of
HYGIENE
& TROPICAL
MEDICINE





Lucinda Parr

Secretary & Registrar

Welcome to LSHTM and meet the team

Student Advice & Counselling Service

Emma Nabavian, Head of Student Advice & Counselling / Student Counsellor

Olivia Cunningham, Student Counsellor

Luiza Passaglia Nascimento, Senior Student Adviser

Flo Nicholas, Student Adviser



Student Advisers

Confidential and impartial advice:

- Accommodation advice
- Financial worries
- Disability & Dyslexia support
- Other queries related to healthcare, childcare etc



Free wi-fi access

Find the network: **lshtm-conf**

Password: **jameslind**



To activate: open a browser and enter an email address

Available in the Keppel Street building

Until Monday 2nd October

Next week: your network log-in will give access to *Eduroam* wireless network

No smartphone / laptop / tablet?

Computers in Accommodation Helpdesk (priority to those
looking for accommodation)

Buildings Access

- Before Monday, limited access (wear your ISW badge)
- You **can** access: Finance, Refectory, Common Room, Accommodation Helpdesk (and WCs!)
- Photo ID cards issued from next week which give full access





What's it like
to study
here?

How do I get
my Oyster
student
discount?

Who can I
turn to for
support?

What can I
do during
my spare
time (will I
have any?)?

Will London
ever feel like
home?

Is anyone
else feeling
worried?

Will I pass??

How do I
open a bank
account?

Am I safe in
London?

What's for
lunch?

- **Welcome packs**
- **Copies of schedule**
- **Presentations will go up today/ tomorrow** (*search for International Students Welcome on www.lshtm.ac.uk*)

- **Tours of building and local area**
- **Social Events (in Refectory)**
 - *Tonight 5:15 – 7:15 pm: Meet & Greet*
 - *Tomorrow 5:15 – 7:15 pm: Traditional British Pub Quiz*
- **Movies – new addition!**
- **Sunday Walk (2 – 4 pm)**

Thursday and Friday

- 1:45 – 2:30 pm
- 4:30 – 5:15 pm
- Please sign up for your tour (and remember which group you signed up to)
- Tours will be round the building and around the block
- Not all teaching spaces not included – you will see these next week
- Meet on the front steps for your tour
- If you are in Tour Group 1 (13:45) please go to lunch first!

During free time

During gaps in the ISW schedule (e.g. after lunch) then check our **“things to do locally handout”** in your packs.

However, if you really want to stay in the building, then please avoid the areas where staff are setting up for tonight’s staff event.

Or...

Thursday (today) at 15:00

March of the Penguins

(77 minutes)

John Snow Lecture Theatre



Each autumn, all the Antarctic emperor penguins leave the ocean, their normal habitat, heading inland to their ancestral breeding grounds. There, they hatch a chick. For the chick to survive, both parents must make multiple arduous journeys between the ocean and the breeding grounds over the ensuing months.

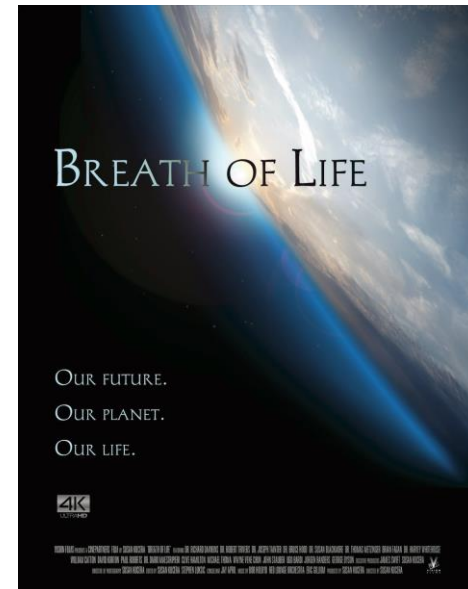
Movie: Friday

Friday (tomorrow) at 14:45

Breath of Life

(82 minutes)

John Snow Lecture Theatre



Filmed in Europe, Scandinavia, North America and Hawaii the film features breath-taking cinematography and insightful commentary from the world's greatest evolutionary biologists and psychologists — but it is the common sense of farmers in the drought-stricken western United States and the wisdom of Hawaiians from the most isolated place on the planet that show us the way back to a more honest and authentic relationship with the world and reality.

Thursday 17:15 – 19:15 Meet & Greet (Library)

Informal get-together

Wine, beer and soft drinks

Friday 17:15 – 19:15 Pub Quiz (Pumphandle Bar & Refectory)

Put your general knowledge to the test. Prizes to be won!

Both evenings will be hosted by our ISW Helpers **Mphatso Phiri** and **Asad Zaidi** who have just completed their MSc.

Sunday walking tour (2 – 4 pm)

Join us for a **guided walking tour** of the area surrounding the School, known as Bloomsbury.



The **2-hour walk** (5 separate groups) will cover several of the area's iconic garden squares, and will introduce you to some fascinating local history.

Come with **comfy shoes and an umbrella / rain gear!**



So that we can manage group size, the walk is open to new LSHTM students only (no friends family, sorry).

ISW Marketplace during lunch today

Lower Ground Café (next to Refectory)

- Meet today's guest speakers to find out more
 - HOST
 - Nightline
 - Chaplaincy
 - Student Central
- Also meet the School's Recruitment & Alumni teams

If you still need a place to live:



Visit the Accommodation Helpdesk

- Open 12-5 pm Thurs 19th – Weds 26th September (not Sat / Sun)
- Based in the e-library in Keppel Street building
- After Weds 26th September, please contact **studentadvice@lshtm.ac.uk** for accommodation queries and advice

Registration w/c 24th September

- Monday:** Registration
- Tuesday:** Registration
- Wednesday:** Life & Work sessions
- Thursday & Friday:** Check programme-specific timetable

All info about week commencing 24th September is at:

<https://www.lshtm.ac.uk/study/new-students/starting-your-course-london/masters-orientation-and-programme-information>