

Prospectus 2026-27



LONDON
SCHOOL of
HYGIENE
& TROPICAL
MEDICINE



Contents

○ Introducing LSHTM	03
Foreword	03
Why LSHTM?	04
Course Types	06
Fees & Funding	07
Entry Requirements	08
Student Life	10
Student Experience	11
Supporting You	12
Careers & Connections	13
Career Destinations	14
● Intensive Taught Programmes	16
○ Distance Learning Programmes	28
● Research Degrees	34
● Short Courses & Individual Modules	38
● Any Questions?	40

Cover images: Histopathology of measles pneumonia. (credit: CDC / Dr. Edwin P. Ewing, Jr.) and Aerial view of mangrove forest in The Gambia. Photo made by drone from above. (Credit: mariusz_prusaczyk, iStock.)

LSHTM undertook the first study of the use of microarray patches to vaccinate children and found the method was safe and effective. The patches are expected to be easier to transport and vastly reduce the need for cold storage of vaccines.

Focusing on the measles and rubella vaccine, the randomized trial undertaken by the MRC Unit The Gambia found the microarray patch induced an immune response that was as strong as the response when the vaccine was given by conventional injection.

Learn more about
the research



Foreword from the Director



Professor Liam Smeeth
LSHTM Director

These are challenging times for all. In the face of climate change, pandemics and the effects of globalisation and urbanisation, priorities for human health are shifting rapidly and new threats are emerging. This era brings greater demand than ever before for creativity, adaptability, academic rigour and, above all, partnerships based on equity and mutual trust.

As a world leading public health university that leads innovative research, translates that research into improved health, and trains the next generation, the London School of Hygiene & Tropical Medicine has a hugely valuable role to play.

Our staff, students and alumni are working together across borders to make vital contributions to addressing major health inequalities and challenges. They bring lived experience, research insights and wisdom from around the world, opening up perspectives, challenging established norms, and providing the evidence needed to inform policy and practice.

LSHTM is a unique global community, dedicated to creating a more healthy, sustainable and equitable world for everyone, because we believe our shared future depends on our shared health.

I am delighted to welcome you.

Discover LSHTM



Why LSHTM?



93% of public health research is world leading or internationally excellent
(Research Excellence Framework 2021)

90% of students agreed their course was intellectually stimulating
(Postgraduate Taught Experience Survey 2025)



87% of clinical medicine research is world leading or internationally excellent
(Research Excellence Framework 2021)

88% overall student satisfaction rate
(Postgraduate Taught Experience Survey 2025)



Over 125 years of health innovation

90% of students employed or in further education
(Graduate Outcomes Survey 2019/20-2022/23 respondents 15 months post course)

Why London?



Historic city

From the Tower of London to St Paul's Cathedral and the Houses of Parliament, London has some of the most iconic landmarks in the world, which together tell the fascinating 2000-year history of the city and help make sightseeing a daily activity.



Networks and connections

A global hub for professionals and practitioners across a range of sectors and industries, London is a great location to find connections, build networks, and learn from some of the very best leaders in the field.



I have had the best year of my life here in London. As a city it never ceases to offer a new thing to do or a new place to see. I have met people from all walks of life.

Amit – India

MSc Health Policy, Planning & Financing



Multicultural

London truly is a global city, and its cultural wealth and diversity are reflected in its art, music and cuisine. So whether you are from the UK or further afield, you will always find people and places in London to help you feel at home.



Student hub

London was named one of the world's top student cities (3rd) in the QS Best Student Cities 2026. LSHTM is located in Bloomsbury, an area in the heart of London known for its rich academic, literary and medical history. LSHTM is close to partner institutions of the University of London, the Wellcome Trust and the Francis Crick Institute, and is only a few minutes away from the shops, restaurants and entertainment of the West End.

Hear more about the student experience in London on our student blog



Course Types

At LSHTM, we understand learning isn't a one-size-fits-all, and therefore offer a range of different study levels and modes designed to suit you and your study journey.

Intensive taught programmes

LSHTM has a suite of intensive taught programmes that can be studied full-time over one year, with some also available part-time over two years or via split-study. Most of our taught courses are taught in-person on weekdays between 9:30am-5pm.

LSHTM also welcomes applications to some of our programmes from medical students wishing to intercalate after their third year of study from any recognised university in the world.

Distance learning programmes

Distance learning is a great study option which allows you to fit your education around work and home life commitments wherever you are in the world. We currently offer six distance learning programmes, each of which can be taken as a Postgraduate Certificate, Postgraduate Diploma or Master's degree. The structure of the programmes allows you to be flexible and study at a pace that suits you.

Individual modules

Our individual modules are a great way to expand your knowledge and gain new skills whilst not requiring the same time commitment as a full programme. We have a range of modules across both our intensive and distance learning programmes available for standalone study.



Research degrees

Our research degree programmes lead to a degree of MPhil, PhD or DrPH (Doctorate of Public Health).

The MPhil and PhD are aimed at students who anticipate a career in which research plays a major role, whereas the DrPH programme is intended for those who want a career which combines high level leadership, management and research skills.

Short courses

Our short courses provide opportunities to study specialised topics in a broad range of public and global health fields in addition to those available through the taught programmes.

Discover our study modes



Fees & Funding

Undertaking further study is a significant, yet rewarding investment, but there are many ways to support managing the cost of your studies.



Tuition fees

As a student, you will need to pay a tuition fee to LSHTM for your programme of study. This varies according to the type of programme you choose. Further details about LSHTM's tuition fees, including the Tuition Fees Policy, can be found on our website.

Funding

LSHTM offers a range of scholarships, bursaries and studentships for master's and research studies. Alternative funding may also be offered through our partnerships or via a number of external organisations.

Student loans

You may be eligible for one or more loan schemes. Information about the most common loan schemes, including Postgraduate Loans, Professional and Career Development Loans, US Federal Loans and Canadian Loans, can be found on our website.

You should also contact your own Ministry of Education or Education Department, which will have details of many schemes and which will be able to advise you of your own government's conditions for studying abroad.

Find out more about fees and funding at LSHTM



Entry Requirements

Intensive taught programmes

The normal minimum entry requirement to be considered for intensive taught programmes admission at LSHTM is at least one of the following:

- a second-class honours degree from a UK university, or an overseas qualification of an equivalent standard, in a relevant subject
- a qualification appropriate to the course of study to be followed, in medicine, dentistry or veterinary studies
- a master's degree in a subject appropriate to the course of study to be followed
- a professional qualification appropriate to the programme of study to be followed.

Please check the individual programme on our website for comprehensive entry requirements.

All applications must be made online. Applications usually open in November and close in July for all students requiring a Student visa and normally August for all UK, Irish and non-Student visa students. Make sure to check the deadlines when applying. We strongly advise that you apply early as popular programmes will close earlier than the deadline if they become full.



Intercalated study

You must have the equivalent of a bachelor's degree and must have completed the first three years of your medical degree to apply for intercalated study. Some taught programmes may have additional experience requirements. The application process is the same as for all other intensive taught applicants.

Distance learning programmes

Entry requirements vary per distance learning programme, please see the information on our website for more information.

Applications for distance learning programmes usually open in November and close in September, with access to the virtual learning environment, Moodle, being made available from October.

MPhil/PhD and DrPH

The normal minimum entrance qualification for registration at LSHTM on a MPhil/PhD/DrPH programme is evidence of an aptitude for research and at least one of the following:

- a master's degree in a subject appropriate to the course of study to be followed (recommended)
- a qualification appropriate to the course of study to be followed, in medicine, dentistry or veterinary studies
- an Upper Second Class Honours (2:1) degree from a UK university, or an overseas qualification of an equivalent standard, in a relevant subject
- a minimum of two year's appropriate experience (DrPH applicants).

For more research degree application guidance, please see page 34.

Short courses and modules

Entry requirements vary per short course, please see the information on our website for more information.

English language requirements

To study at LSHTM, you must meet our English language requirements to be able to make the most of your course.

You will need to take an approved English language test if your first language is not English or if your studies at university have not been conducted wholly in English. You may also need to take a test if you require a Student visa.

Discover our full academic and language requirements



Student Life

At LSHTM, we know the student experience is so much more than just what you learn in the classroom or laboratory. That's why we encourage our students to get involved with the range of additional experiences at LSHTM and in/around London.

Groups and networks

Students at LSHTM come together around shared interests through a wide range of groups and networks. Some are linked to wider organisations, such as Friends of MSF, while others are entirely student-led, reflecting the diverse backgrounds, experiences and passions of our community. In addition, there are a number of School-wide networks open to all, including the LGBTQ+ Network, Parents & Carers Network and Sustainability Group.

Students' Representative Council (SRC)

The SRC is an independent student-led body for students. Its primary role is to represent any student body issues in educational, cultural, sporting, social and general interests within LSHTM's governance. The elected members of the SRC Executive also coordinate social events, including student parties, cultural celebrations and language exchanges. The SRC supports and sponsors charitable activities and student involvement.

School Centres

LSHTM is home to 13 multidisciplinary Centres, each facilitating cross-faculty research in a specialised field. The Centres organise a number of seminars and events and many are keen to have students take on an active role in their work. By joining a Centre, you will be able to access a central hub of academic excellence and a network of peers with shared interests, as well as expand your career skills through active involvement.



Student Experience



"The insights and experiences I've gained will undoubtedly shape my future career. Embrace the opportunity to explore a new city, meet diverse people, and expand your horizons both academically and personally."

Edwina – Hong Kong

MSc Nutrition for Global Public Health
(Intercalating)



"I chose LSHTM because of the global focus that it has and the connections that it has all over the world. One of the really special things about the distance learning cohort is that you meet people from all corners of the world."

Elizabeth – Canada

MSc Epidemiology by Distance Learning



"I realised early during the course that we were not treated only as students, but also as professionals. By encouraging deep involvement in events such as COP28, the School has helped us understand the real-world application of what is being taught in the form of theories and concepts."

Shahab – India

MSc Climate Change & Planetary Health



"I have been pleasantly surprised with the amount of personal and academic support available to students. I've also enjoyed initiatives that foster a sense of community at the School."

Samuel – UK

MSc Medical Parasitology & Entomology

Our Student and Alumni Ambassadors are always happy to help with any questions you might have and to provide insights into their experiences as a student at LSHTM.

Discover more of the student experience



Supporting You

Our intensive taught programmes and research degree students benefit from a range of support services throughout their studies.

Student Support Services

The Student Advice and Student Counselling teams offer a confidential space for you to discuss any matters of concern, practical or emotional, which might be affecting you. Our Student Advisers can provide you with guidance on accommodation, disability (including dyslexia and other specific additional learning needs) and financial hardship.

The team can support on:

- Accommodation advice
- Counselling & wellbeing
- Disability & dyslexia support
- General welfare matters
- Information about life in London
- Mental health advice.

✉ studentadvice@lshtm.ac.uk

Student Counsellors provide a confidential counselling service if you are experiencing emotional or psychological difficulties.

✉ studentcounselling@lshtm.ac.uk

Accommodation

Whether you plan to live in halls of residence or rent private accommodation, LSHTM can provide advice and guidance on finding a place to live in London. We have a number of rooms in University of London (Intercollegiate) Halls, located near LSHTM, while private residence can be found across London.

Immigration & visas

If you need a visa to study in the UK, the type required will depend on your course and mode of study. LSHTM is registered as a Student visa sponsor with the UK Government's Home Office, meaning we can sponsor students coming to the UK to study with us.

✉ visa-enquiries@lshtm.ac.uk

Learn more about
our support services



Careers & Connections

The knowledge you gain and the connections you make are some of the most important elements of your studies. We offer a range of support and activities to ensure you have the best prospects for your career and the connections to help you get there.

Careers Service

The LSHTM Careers Service provides a range of support. You will gain regular exposure to employers through informal sessions with alumni, as well as panel discussions, presentations and fairs with key organisations. Students also have access to a range of online job vacancy services that can match you to specific roles.

The Careers Service also hosts workshops and webinars to enhance your job seeking skills, including writing CVs, application forms, interviews, networking and career planning. You can also book one-to-one appointments with our careers consultants, who will inform you of the broad range of options available and help you with your next career transition.

Find out more about
our Careers Service



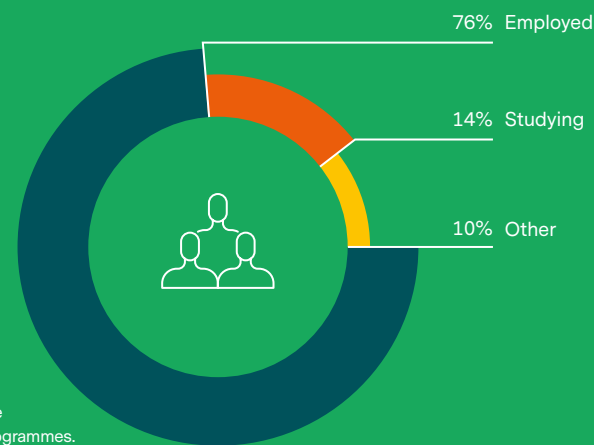
Alumni

Alongside the networks and friendships you will gain during your studies, graduates also have access to career support services for two years post-study as well as LSHTM Connect, Alumni Library access and other events and activities.

LSHTM Connect allows alumni to interact with other alumni, staff, and current students. On the platform, alumni can also organise events, share jobs and photos. Alumni can also volunteer as mentors giving current students the opportunity to ask them questions and seek mentor support.

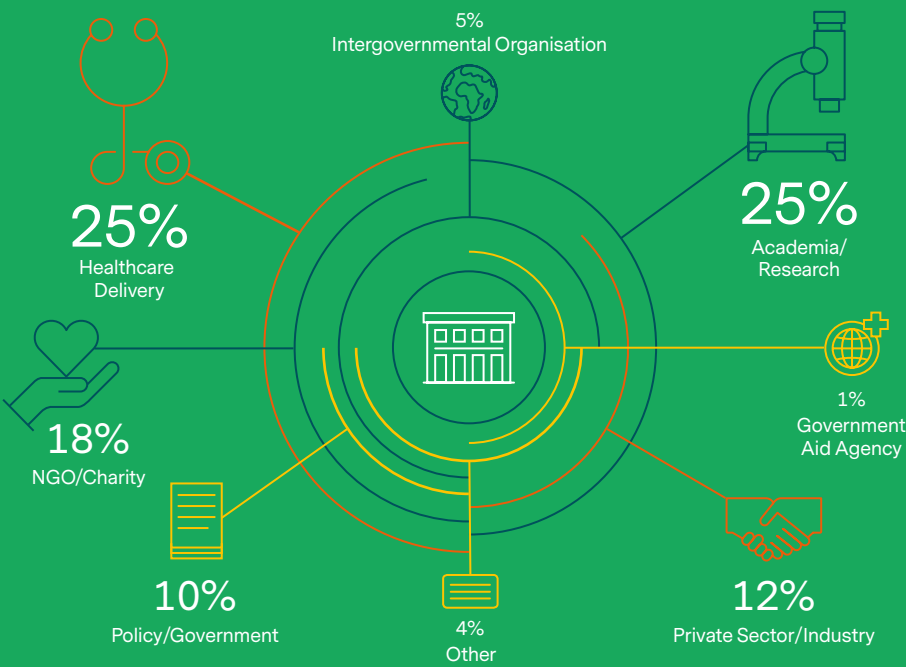
Career Destinations

Employability



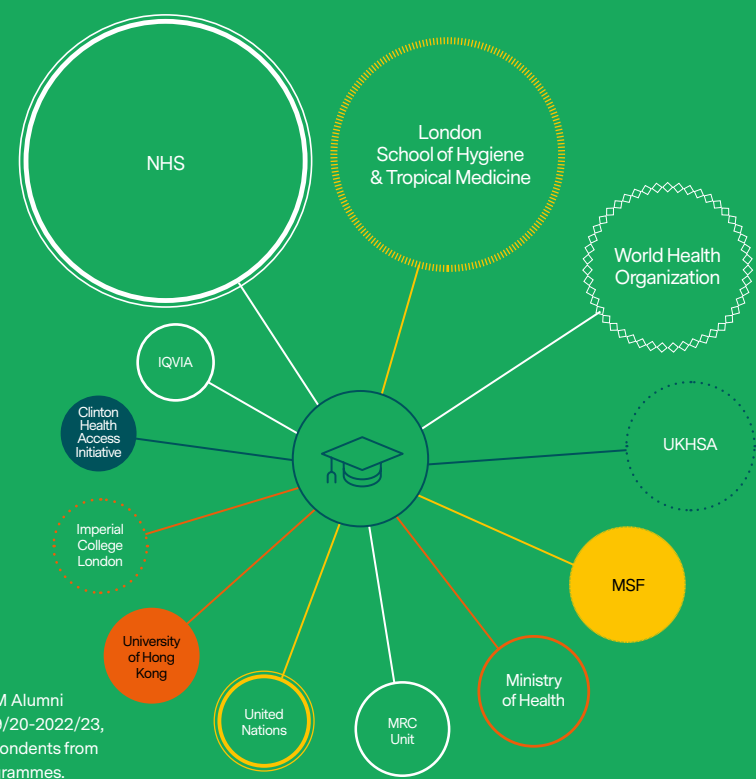
Source: Graduate Outcomes Survey, 2019/20-2022/23, sample of respondents from in-person programmes.

Employment Sector



Source: LSHTM Alumni database 2019/20-2022/23, sample of respondents from in-person programmes.

Top Employers



Source: LSHTM Alumni database 2019/20-2022/23, sample of respondents from in-person programmes.

Sample Job Titles



Source: LSHTM Alumni database 2019/20-2022/23, sample of respondents from in-person programmes.

Intensive taught programmes

The study experience

Our intensive programmes are offered either one year full-time or two years part-time/ by split study, delivered in person in London or online. They provide an immersive and flexible learning experience, combining lectures, practical sessions, and independent study.

The learning environment

Studying at LSHTM will give you access to a wealth of knowledge, the expertise of staff and unparalleled benefits from contact with people from diverse backgrounds and nationalities. The fusion of staff and student experience provides a rich environment for all our students to learn not only from staff, but importantly, to learn from each other.

The teaching

Teaching and training is carried out by dedicated staff who are leaders in their fields and have considerable links with key universities and research institutions around the world, in addition to their extensive academic, practical and international experience.

A range of teaching methods are used – from formal lectures to small group activities and practical sessions. Our approach to learning is carefully curated to ensure you take the most from your timetabled teaching. You will often work together with other students to tackle a problem, complete a project or to acquire new skills, with the class tutor acting more as a catalyst than an instructor.

Personal tutor

At the start of your studies, you will be assigned a personal tutor who can advise on your choice of modules, support for personal issues that could be impacting your work, or simply to be available for a chat about how you are progressing.

The structure

All intensive taught programmes start in late September and offer a one-week orientation period, including an introduction to studying at LSHTM and key study skills.



This period is followed by a term of core material (Autumn Term). The remaining two terms (Spring and Summer Terms) comprise core and elective modules chosen from a wide range of options. This is followed by project report work during the summer months (typically June-September).

Assessments

Assessments vary per programme and module, but typically involves a combination of unseen written examinations, written assignments, group work, presentations and, where applicable, laboratory practicals.





Project report

The project report is the culmination of the master's programme, when you put into practice everything you have learned during the year. It can take the form of a policy report, a literature review or a research project, and is usually due to be submitted in the first week of September at the end of your studies. For some programmes, the project work may be undertaken overseas, in which case you may need to find additional funds to cover the costs involved. LSHTM has some trust funds to which students can apply to help cover the cost of travel.

Learn more about the taught programmes experience



Credit framework

We operate a credit system for our master's programmes, consistent with the English and European (ECTS) credit systems. This allows other educational institutions and employers across the UK, Europe and beyond to easily understand and recognise the amount and standard of study involved in our programmes.

Credits are awarded for successful completion of modules and the project. 180 M-level credits (90 ECTS) are required in total for a master's degree – normally breaking down into 60 credits from Autumn Term modules, 75 credits from Spring and Summer Term modules, and 45 credits from the project report. All credits obtained will be shown on final degree transcripts.



"It's one of the most inspiring things in the world. You walk into a seminar and you have doctors there, and medical students, and people that have worked in health policy for 10 years. You might have a health economist or someone who's worked with an NGO. You end up having discussions that are so rich, so holistic, because you have people not just coming from different professional backgrounds but also coming from a wide range of countries, cultures and religions."

"LSHTM has provided me with the knowledge, skills, and network necessary to make a lasting impact in the field of health policy."

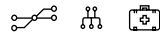


Oria – Canada
MSc Public Health

Key

-  Part-time option
  Split-study option
  Open to intercalating students
  Field trip
-  Mathematical requirement
  Medicine degree requirement
  Computer programming requirement
-  Work experience requirement
  Postgraduate Diploma route available
-  Postgraduate Certificate route available
  Distance Learning route available

MSc Climate Change & Planetary Health



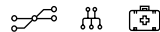
Designed to: understand the connection between planetary and human health to create a liveable planet for future generations.

Unravel the impact of climate change on diverse populations around the world and analyse how our behaviour influences the planet. You'll build confidence in assessing links, anticipating problems, finding solutions and intervening early, as well as developing specialist skills to become an agent of change.

Find out more



MSc Climate Change & Planetary Health (online)



Designed to: develop specialist skills that work towards a sustainable planet and healthy population.

Learning synchronously with the in-person cohort, you will study how global environmental systems (such as heat stress, food systems, air pollution, and biodiversity loss) affect human health and benefit from the specialist expertise of over 60 experts working in the field of planetary health.

Find out more



MSc Control of Infectious Diseases



Designed to: develop disease control experts to help shape the global health landscape.

This MSc bridges the fields of epidemiology, laboratory sciences and public health. It develops your specialist skills, ready to influence research, policy, strategies and practices. You'll gain critical knowledge in global health and infectious diseases, including investigating the transmission of endemic and epidemic infections, as well as understand how to select appropriate methods of control.

Find out more



MSc Demography & Health



Designed to: train population scientists to tackle global challenges in population trends.

Some of the most critical global issues are demographic, creating demand for trained demographers to contribute to population policy, practice and research. Your training on this programme will include cutting-edge techniques in demographic estimation, population projections and data analytics. You will also study the complex interaction of population dynamics with socioeconomic, political and environmental factors, understand the processes that govern population change and learn to assess population trends and policy from a critical perspective.

Find out more



MSc Demography & Health (online)



Designed to: study population dynamics and their interaction with global health.

Trained demographers are essential to providing accurate population projections and analysis, underpinning our understanding of wider global trends. Learn to analyse processes that govern and interact with population change, including reproductive behaviour and social relationships, exposure to health risks, economic growth, and climate change.

Find out more



MSc Epidemiology



Designed to: study the distribution and determinants of health in populations, and to apply this knowledge to improve population health and health equity.

Studying Epidemiology, you'll be equipped to investigate both infectious and non-communicable diseases spanning diverse global contexts. By the end of the course, you will be able to make valuable contributions to medical research and public health worldwide, developing transferable skills appropriate for health-related careers such as in academia, the public, private, and non-profit sectors, and in clinical research.

Find out more



MSc Global Mental Health



Designed to: investigate the mental health needs of populations in different settings and formulate ways to better support them.

Delivered in partnership with



LSHTM combines its expertise in clinical and public health with King's College London's long-standing reputation in psychiatry to deliver an innovative programme in global mental health. You'll learn how to initiate, develop and oversee mental health programmes in low-resource settings, and carry out research, preparing you to make a valuable contribution to research, public health, policy and practice.

Find out more



MSc Health Data Science



Designed to: help identify new ways to prevent, treat, and cure disease with data science.

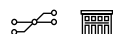


Combine your passion for healthcare with technical knowledge with an MSc in Health Data Science. You'll develop the specialist skills you need to become a successful and in-demand health data scientist and be immersed in an inspiring environment where world leaders in machine learning, electronic health records and epidemiology are pushing boundaries.

Find out more



MSc Health Policy, Planning & Financing



Designed to: provide a holistic perspective of health policy, planning, financing and health economics that is relevant to countries at all levels of development.

Delivered in partnership with



Benefiting from the expertise, resources and networks available at both LSHTM and LSE, you'll discover how to critically analyse health system issues, evaluate the effectiveness of policies, and devise appropriate health policy responses. By the end of the course, you could be making valuable contributions as you advocate for the steady growth of health systems worldwide.

Find out more



MSc Immunology of Infectious Diseases



Designed to: explore bodily defences against infection and how this can be used to create lifesaving therapeutics and vaccines.

Exploring a whole host of infectious diseases, you'll master the basic principles of host immunity against the diverse range of pathogens that confront human populations. Studying at LSHTM, you'll also benefit from our unique mix of expertise in immunology, vaccinology, molecular biology, virology, bacteriology, parasitology, mycology and clinical medicine.

Find out more



MSc Medical Microbiology



Designed to: provide you with the skills needed to tackle microbiology challenges in the ever-evolving world of pathogens.

Taught by international experts, you will gain unique insights into current global challenges and undertake hands-on laboratory work to understand pathogenic microorganisms in depth. You will also build on specialist diagnostic, research, and analytical skills to assess and critique approaches to the prevention of disease.

Find out more



MSc Medical Parasitology & Entomology



Designed to: explore the complex life cycles and biology of parasites and their vectors and see how technology has the potential to significantly advance this area to control and eliminate infections.

This MSc provides you with a deeper level of understanding of how parasites cause disease and are transmitted and how best to control disease in humans. This research-led programme of teaching is delivered by parasitology and medical entomology experts at the forefront of the field. You will acquire an impressive array of practical skills and receive research training, carry out fieldwork and explore module options designed to develop your specialist knowledge.

Find out more



MSc Medical Statistics



Designed to: develop medical statisticians who can solve some of the biggest challenges in medicine.

Help to advance medical knowledge, prevent diseases, improve treatments, and influence government health policies with an MSc in Medical Statistics. From designing clinical studies to identifying the causes of diseases, you'll develop the specialist skills you need to play a vital role in global health and development.

Find out more



MSc Nutrition for Global Public Health



Designed to: equip students with the concepts, information and skills needed to tackle Public Health Nutrition priorities in a sustainable and equitable way.

Students will gain extensive expertise through integrating epidemiological, dietary, public health, social and biological aspects of nutritional science informed by the latest research. You will develop critical analytical skills, be equipped to design interventions and evaluate their impacts, and bridge translation of science to policies and programmes, ready to tackle the challenge of all forms of malnutrition worldwide.

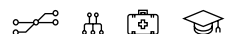
Find out more



Accredited by



MSc One Health: ecosystems, humans & animals



Designed to: unravel the multidimensional connection between humans, animals and environments to innovate new ways to control complex health challenges.

A transdisciplinary course delivered by LSHTM and the Royal Veterinary College (RVC), you'll learn from specialists in the field to understand disease ecology, evolution and emergence, including the drivers, impact and control of them (social, economic, biological, demographic, ecological).

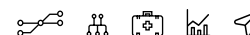
Find out more



In Partnership with



MSc Public Health



Designed to: develop students to become a catalyst for change in preventing disease, improving health, and reducing health inequalities.

Taught by active researchers, you'll gain a strong grasp on the core disciplines of public health and have the option to follow the general stream or to select one of four focused streams to concentrate on the area that matters most to you and your career plan; Health Economics, Health Promotion, Health Services Management, or Health Services Research.

Find out more



MSc Public Health for Eye Care



Designed to: help you develop better evidence-based interventions, and deliver better eye health services at the local, national and global level.

Understand how general public health and epidemiological principles apply to the promotion of eye health in your own context and around the world. Develop the skills needed to critically appraise interventions and programmes, and undertake your own eye health research projects. Through this MSc, you will move beyond considering just the needs of the patient in front of you, to the needs of the entire population.

Find out more



MSc Public Health for Global Practice



Designed to: produce public health specialists with the expertise to address critical health issues and develop innovative solutions for underserved communities in low- and middle-income countries.

Gain the skills needed to address complex health and development challenges, and to design and manage public health programmes, to become a dynamic leader and champion in your chosen field. You'll be taught by a team of social scientists, epidemiologists, health economists, health policy and maternal and child health specialists, among many other experts. Become part of a vibrant, tight-knit cohort of students who all have wide-ranging relevant experience, so that you can support and learn from each other throughout the degree.

Find out more



MSc Reproductive & Sexual Health Research



Designed to: provide expertise in reproductive and sexual health, and the research methods required to examine this vital area of health across the lifespan.

Developed and delivered with



One of the few UK universities offering a course in this specialism, you'll learn from experts at the forefront of the field who carry out ground-breaking research in key areas including sexual behaviour, control of STIs, reproductive rights and justice, and maternal, perinatal and newborn health. We'll help you build your expertise in reproductive and sexual health, and equip you to carry out and appraise policy-relevant research for addressing this key area of public health.

Find out more



MSc Sexual & Reproductive Health Policy and Programming (online)



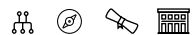
Designed to: bring change through shaping policies and programmes on issues surrounding sexual and reproductive health and rights.

Exploring emerging and neglected issues across the area of sexual and reproductive health, you'll be taught by a team of experts who have experience in contributing to policy and global health programmes.

Find out more



MSc Tropical Medicine & International Health



Designed to: develop the careers of medical doctors to make significant impacts on global health through knowledge and understanding of the contribution of medicine to humanitarian, LMIC and resource-constrained settings.

As a medical professional looking to specialise in tropical medicine and international health, this course will facilitate you to examine the causes, pathogenesis, diagnosis and management of major diseases in LMIC, humanitarian and resource-constrained settings. You will develop skills in diagnostic parasitology, microbiology and entomology, and knowledge of how to apply epidemiological and other scientific principles in evidence-based practice of global health.

Find out more



MSc Veterinary Epidemiology



Designed to: train veterinary epidemiologists at the front line of disease surveillance and control.

In Partnership with



Combining LSHTM's strengths in epidemiological principles and communicable disease epidemiology with the RVC's expertise in veterinary epidemiology, animal health and production, you'll receive training in methodological skills for carrying out epidemiological studies while learning skills in surveillance and disease control in animal and human populations.

Find out more



Distance Learning Programmes

Distance learning is an ideal option if you are unable to study in London for an extended period of time. You can study with LSHTM from anywhere in the world, over several years if needed, at times that fit in with your other commitments.

Why distance learning?

Flexibility – Our distance learning programmes allow you to study independently and to fit in with your other commitments, subject to some deadlines. You have up to five years to complete your programme.

Study anywhere in the world – Enhance your experience with a prestigious qualification no matter where you are based.



Blended learning – After completing a minimum number of core modules, you may choose to study up to two elective modules from our intensive taught programmes in place of distance learning modules.

Quality of learning and resources – Our distance learning programmes are developed by academic staff at LSHTM, to the same standard and quality as on-campus programmes. You will benefit from comprehensive online resources and study materials, written specifically for the programmes by subject experts.

Career progression – Our programmes enable you to continue building your career momentum while gaining the knowledge and skills for future opportunities.

Pay as you study – You can pay for what you plan to study each year at the point of registration rather than paying the whole fee up-front if preferred, which allows you to spread the cost over the lifetime of your programme.



“Having that flexible learning and also the more independent way of learning was really helpful in terms of being able to work full-time during the degree. As well as being able to connect with people around the world as there's a real global network within the distance learning programmes.”

“The beauty of the distance learning programme was that it was very flexible.”



Chelsea – New Zealand
MSc Global Health Policy by Distance Learning



The distance learning experience

Studying by distance learning gives students access to an online global community and enables them to study wherever they are.

How you study

Our distance learning programmes are predominantly online and largely self-directed study to enable students to study independently and at times convenient to them. Some modules may have occasional complementary live online sessions, however you have access to tutorial support and the ability to interact with other students and form study groups throughout the study year via the discussions in our virtual learning environment, Moodle.

The study year

The study year runs from the beginning of October through to the June examinations. Some students also study between June and September with extended tutorial support (e.g. those undertaking projects, the Clinical Trials integrating report, or two of the Epidemiology modules). Deadlines for submission of coursework vary per programme but are usually in February, March, May, and September.

Time commitment

To complete in the minimum period (one year for the postgraduate certificate, and two years for the postgraduate diploma or master's) you should be prepared to study for 15–25 hours per week throughout the study year. Most students take between three and five years to complete their master's by distance learning.

Study materials

You receive access to LSHTM's virtual learning environment, Moodle, from the beginning of October. Most of your study materials and resources are provided here. For some modules you receive printed study materials and/or additional computer software such as Stata. These resources guide your self-study and indicate how and where you can obtain further materials and support to enhance your studies.

Module information

Module specification documents provide full details of the content, learning objectives, study materials and method of assessment of each module, plus any specific requirements.

Assessment

This varies per module, but typically includes a combination of unseen written examination papers and written assignments. Examinations take place once a year in June.

Support and feedback

Module tutors answer your queries and promote discussion, as well as providing written feedback and advice on formative and assessed work. If you undertake a project, you are assigned a personal supervisor who will offer support. We encourage you to engage in academic discussions with tutors and fellow students through the online discussion forums, some of which may be held live. You also receive access to past examination papers, examiners' reports and previous years' project reports.

Computer requirements

You will need a computer and regular access to the internet to view your learning materials (including online library resources), participate in discussion forums and submit assignments. You will need basic software, such as a PDF reader, and the ability to store electronic documents.

Credit framework

LSHTM awards credits for successfully completed modules and projects/integrating reports. These are consistent with the English international entry requirement and European Credit System (ECTS).

To obtain a qualification, the following credits must be gained:

- PG Certificate – 60 UK (30 ECTS) credits
- PG Diploma – 120 UK (60 ECTS) credits
- MSc – 180 UK (90 ECTS) credits

Blended learning

Once you have completed a minimum number of compulsory core modules, you may be able to substitute up to two elective modules from our intensive programmes in place of distance learning modules. Where available, modules run for 2.5 days per week over a five-week period. If you select this option, you must pay additional module fees and you may be required to arrange your own travel and accommodation.

Learn more
about the Distance
Learning experience



Clinical Trials

Designed to: examine all the aspects that influence clinical trials in practice, develop your abilities to carry out trials effectively and shape the future of health.

Taught by academics with extensive expertise in this area, you will acquire the skills you need to excel in your clinical trials career and make a difference to people's lives globally. You will explore key elements in the methods and delivery of randomised trials of health interventions, to develop a well-rounded knowledge of the field; these include trial design and implementation, good research and management practice, data management, statistical analysis, interpretation and reporting.

Find out more



Epidemiology

Designed to: study the distribution and determinants of health in populations and to apply this knowledge to improve population health and health equity.

Studying Epidemiology, you'll be equipped to investigate both infectious and non-communicable diseases spanning diverse global contexts. By the end of the course, you will be able to make valuable contributions to medical research and public health worldwide, developing transferable skills appropriate for health-related careers such as in academia, the public, private, and non-profit sectors, and in clinical research.

Find out more



Global Health Policy

Designed to: support you in developing foundational knowledge of multidisciplinary theories and approaches to the field of global health policy.

The programme aims to foster understanding of the complex influences on health policy and the interconnected nature of health issues that often transcend national borders in our ever-changing world. Exploring topics such as economic, political and environmental impacts on health and global health policy, you will have an opportunity to analyse and challenge policymaking, critically evaluate case studies and analyse their relationship to global health policy in depth. Through a diverse suite of elective modules, you will have an opportunity to examine selected issues such as global mental health, health systems, specific infectious diseases and diverse areas of public health.

Find out more



Health in Humanitarian Crises

Designed to: provide and enhance the practical humanitarian skills and operational expertise you need to improve health in fragile and crisis-affected communities.

Developed by academics and field experts from the likes of Médecins Sans Frontières, Save the Children and the WHO, this course provides an in-depth understanding of health and humanitarian issues. Exploring the humanitarian project cycle, you'll develop strong evidence-based decision-making skills for effective crisis response and confidently gather critical information, assess and prioritise needs, design programmes and monitor intervention effectiveness.

Find out more



Infectious Diseases

Designed to: develop academic and practical insights into the biology of infective agents and their interaction with the host and the environment, both in a local and global context.

Gain a better understanding of bacterial, viral, parasitic and pathological infections in global contexts through the study of infectious diseases. Discover how the basic principles of public health, biostatistics, epidemiology and biology apply to the control of infectious diseases and build your specialism within the general area of infectious and pathological diseases.

Find out more



Public Health

Designed to: provide the knowledge and skills to address public health issues in diverse settings.

This directed self-study programme will allow you to explore different disciplinary perspectives and how they can be applied to public health issues in low-, middle- and high-income settings. You'll gain a strong grasp of the core disciplines of public health and, with a wide range of optional modules available, the programme allows you to broaden and deepen your knowledge across many disciplines or opt for a more focussed programme of study.

Find out more



Research Degrees

LSHTM offers a unique environment in which to undertake research training due to our academic excellence, multi-disciplinary work and collaborations worldwide. You will develop your career through original research and related skills in a specific field or subject.

Research opportunities

LSHTM's wide-ranging research programmes examine ways of improving health and investigate the aetiology, diagnosis, prevention and control of both communicable and non-communicable diseases. Doctoral students work in a variety of disciplines from laboratory sciences to health services, including: molecular biology, immunology, epidemiology, statistics, mathematical modelling, social science, health services research and health policy and economics. Your thesis could be desk-based or involve field or laboratory work.

Research skills training

Doctoral students have access to a range of specialist courses and transferable skills training, including those available through our taught programmes. Students are also encouraged to present at appropriate national and international meetings.

Planning your studies

As a research student, you will have to spend at least 9 months in London in total. DrPH students complete the taught components in their first term and are also required to be at LSHTM during other key times for planning and review.

A supportive environment

You will work with a first and second supervisor, under whose guidance you will develop the intellectual and technical skills required for your chosen field. You will also have an Advisory Committee, which facilitates access to a wider range of staff expertise within LSHTM or beyond.

LSHTM Doctoral College

The Doctoral College at LSHTM provides a focal point for doctoral training, coordinating transferable skills training, and optimising the student experience across the faculties.

Discover more about
our doctoral experience



Research degree applications

Studying for a research degree is an intensive but fulfilling academic experience, but it needs a lot of preparation. Below you will find some guidance on the key steps to take when applying to study a research degree.

When to apply?

LSHTM has a September start date for DrPH and three start dates for MPhil/PhDs: January, April and September. Please allow plenty of time between submitting your application and your intended start date – you will need at least 12 weeks and ideally you should think a year ahead. The DrPH has an earlier application deadline and if you require a visa to study in the UK, you should allow additional time for the visa application process. Find full application deadline information on our website.

Funding opportunities

Unless advertised, LSHTM does not provide funding for research degree fees. Our website contains some further information on potential sources of funding. You may also look out for advertised studentships or jobs at LSHTM that include an opportunity to do a research degree.

Identify a prospective supervisor

You do not have to name a supervisor on your application, but it is more likely to be processed quickly if you have already identified somebody. Use the website to look at research taking place across LSHTM and identify staff who would be most appropriate for your area of interest.

Once you identify a potential supervisor, contact them directly to discuss your proposed research, and to establish whether they have the capacity to take on a new student; if not, they might be able to recommend alternative people.

Draft a research proposal outline

Unless applying for a studentship with a project which has already been defined, you are expected to submit a research proposal with your application. Once you have a clear research topic, outline your proposal in a few paragraphs. For DrPH applications you also need to draft an idea and protocol for your OPA.

Learn more about applying
for a research degree



MPhil/PhD

All PhD students initially register for an MPhil. Although the earlier stages of the degree may include some coursework or formal training in research methods, as well as transferable skills training, such work is regarded as establishing the necessary grounding for research study and your future career rather than as an integral part of an MPhil/PhD degree.

In this respect, the British PhD approach differs from that in some other countries where coursework is part of the degree and included in the formal examination process. In the UK, the degree is awarded only on the basis of the work described in the thesis.

Supervision

You will work closely with two academic members of staff who act as your supervisors. As an applicant, you should identify LSHTM staff with research interests that match your own.

Research students will also have an Advisory Committee, which facilitates access to a wider range of staff expertise within LSHTM or beyond.

Duration

- Minimum 2 years, maximum 4 years (full-time)
- Minimum 3 years, maximum 8 years (part-time)

Research thesis

The thesis topic can be from any health-related discipline or subject area agreed with your supervisors. The PhD thesis has a 100,000 word limit and is read by two examiners (one external to the University of London) and assessed through an oral examination (viva).

Joint PhD programme for Global Health

LSHTM runs a joint PhD programme with Nagasaki University School of Tropical Medicine and Global Health in Japan. Research students on this programme will have opportunities to appreciate and celebrate the diversity of cultures and approaches to improving global health by studying within a community of global researchers.

This programme is only available full-time and the structure is similar to the MPhil/PhD. Students spend a minimum of 6 months in each institution.

Learn more about the MPhil/PhD



Doctorate of Public Health (DrPH)

The DrPH is intended for leaders and future leaders in public health who want a flexible career which combines high level leadership, management and research.

The DrPH has three components, each contributing to the award of the degree.

- **The taught component** - consists of two compulsory modules in the first term, alongside some teaching to help prepare for the OPA. You can also attend other courses, including taught modules, allowing you to tailor the course to your interests.
- **Research Study 1: the organisational and/or policy analysis (OPA).** The OPA usually involves 3-6-months' fieldwork observing and analysing operations at a host organisation to develop a better understanding of how to design and develop effective public health organisations and/or shape public health policy. It is assessed on the basis of a written report not exceeding 15,000 words.

- **Research Study 2: research on any subject related to public health (thesis).** Research Study 2 must be original and make a distinct contribution to the knowledge of your chosen subject. Before commencing the research there is a DrPH Review including a written report (7,500 words), a seminar and an assessment panel. The thesis has a 60,000 word limit. The research thesis and OPA are formally examined together at an oral examination (viva).

Supervision

You will have two supervisors and an Advisory Committee, as required.

Duration

- Minimum 3 years, maximum 4 years (full-time)
- Minimum 4 years, maximum 8 years (part-time)

Learn more about the DrPH



Short Courses

Our short, post-experience and specifically designed courses run from one day to three months, providing the opportunity for intensive study in specialised topics. These courses enable you to refresh your skills and keep up-to-date with the latest research and knowledge.

Course topics

Our short courses cover a broad range of specialised topics in public and global health. Courses usually run on an annual basis and online delivery has become increasingly available. Some of our previous short courses have included:

- AI in Health
- Antimicrobial Resistance (AMR): A multidisciplinary approach
- Essentials of Clinical Trials
- Global Adolescent Health
- Global Eye Health
- Global Health Primer for Doctors
- Infectious Disease 'Omics
- Introduction to Infectious Disease Modelling and Its Applications
- Introduction to Spatial Analysis in R
- Introductory Course in Epidemiology & Medical Statistics
- Laboratory Diagnosis of Malaria
- Travel Medicine

For a full list of LSHTM short courses, please visit our website.



Professional certificates and diplomas

We also offer a number of professionally certified short courses, including:

- Professional Certificate in Pharmacoepidemiology & Pharmacovigilance
- Professional Diploma in Tropical Nursing
- Professional Diploma in Tropical Medicine & Hygiene (DTM&H)

Discover more
short courses



Individual Modules

We have a wide range of modules available from our intensive taught and distance learning programmes for you to take as a standalone module.

Intensive modules

Individual intensive modules are a great way to expand your knowledge and gain new skills whilst not requiring the same time commitment as a full programme.

You'll study alongside our taught programme students in London, building networks and learning from your peers as well as our academic staff.

Each module has its own teaching style and may include lectures, practicals, seminars, group work, and private study.

Time commitment

In the Autumn Term (September-December), modules usually occur over ten weeks with most modules taking place on a single day each week. In Spring & Summer Terms (January – May), modules are timetabled for 2.5 days per week at the same time each week for five weeks. The time you are required to attend class will vary but learning time, including reading, is estimated to be 150 hours per module.

Credits

LSHTM awards credits for completion of modules subject to satisfactory attendance and successfully passing the assessment.

Distance learning modules

You can study almost all the modules from our distance learning programmes on an individual basis. These are ideal for busy professionals or students who want to focus on a particular topic or if you would like to sample one of our formal programmes.

Time commitment

You will receive access to your study materials from the beginning of October. After this, you will be able to study at your own pace, subject to assessment deadlines.

Credit transfer

If you complete an individual module by distance learning and decide to register for a PG Certificate, PG Diploma or MSc, the grades and credits you have gained may be transferred.

Please see the LSHTM website for full requirements and the recognition of prior learning policy.

Learn more about
individual modules



Any Questions?

Contact
our student
ambassadors

lshtm.ac.uk/student-ambassadors

General study
enquiries, campus
visits and
open days

study@lshtm.ac.uk

Intensive
programme
admissions

admissions@lshtm.ac.uk

Distance
learning
admissions

dl-admissions@lshtm.ac.uk

Short
courses

shortcourses@lshtm.ac.uk

Funding and
scholarships

scholarships@lshtm.ac.uk

Tuition fees

fees@lshtm.ac.uk

Visas and
immigration

visa-enquiries@lshtm.ac.uk

Disability
support

studentadvice@lshtm.ac.uk

© 2025 London School of Hygiene and Tropical Medicine

The prospectus is published circa 12 months prior to the academic year to which it relates. Whilst care has been taken to make it as accurate as reasonably possible, the publication of this prospectus is not intended to create legal relations, nor can LSHTM accept liability for changes to, or withdrawal of, courses. Any changes such as newly announced courses of study, amended course titles, changes in fees, module choices or changes to contact details will be incorporated into our website. Athena Swan Bronze renewal award valid until 2029.

The prospectus is printed on FSC® Mix stock – made with a mix of materials from FSC-certified forests, recycled sources and/or FSC controlled wood.



Visit Us

To find out more about
what it's like to be a student
at LSHTM, join us for one
of our open events.



Improving Health Worldwide

London School of Hygiene
& Tropical Medicine

Keppel Street, London, WC1E 7HT
United Kingdom

 lshtm.ac.uk

For study enquiries, please contact:

 study@lshtm.ac.uk

 [@LSHTM](https://www.facebook.com/LSHTM)

 [@LSHTM](https://twitter.com/LSHTM)

 [@LSHTM](https://www.instagram.com/LSHTM)

 [@lshtm.bsky.social](https://bsky.app/profile/lshtm.bsky.social)

 [lshtm.ac.uk/linkedin](https://www.linkedin.com/company/lshtm.ac.uk/)

 [lshtm.ac.uk/youtube](https://www.youtube.com/lshtm.ac.uk/)