



Lead the
world to a
healthier
future

The Executive Programme for Global Health Leadership



Professor Baron Peter Piot

Director of the London School of Hygiene & Tropical Medicine and Professor of Global Health. Chair of the MRC Global Health Group and member of the MRC Strategy Board.

“Today we face continued threats – pandemics, antimicrobial resistance, and a rising tide of chronic diseases. We urgently need strong and dynamic leadership in global health. From founding UNAIDS through to the recent Ebola outbreak, I have personally felt the absence of an experience-based course in strategic leadership.

I am delighted that the School is offering this Executive Programme to address the urgent need for strategic leadership education, to develop specific high-level capabilities, and to build professional networks based on respect, trust and common purpose.”



Professor Dame Sally Davies

Chief Medical Officer for England and previously Chief Scientific Advisor at the UK Department of Health.

“The challenges we face in health can only be met by intelligent, co-ordinated responses informed by applied research that builds the evidence base for effective health practice focused on public need. Even this will amount to little without the leadership capable of seeing it to fruition.

This Executive Programme offers great opportunities for leadership development. The London School of Hygiene & Tropical Medicine’s rich history and expertise across a wide range of health areas, and with considerable expertise in advising on implementation in real-life settings of interventions, service and systems reforms, makes them uniquely qualified to offer such a programme.”



Professor David Heymann

Professor of Infectious Diseases at the London School of Hygiene & Tropical Medicine. Head of the Centre on Global Health Security at Chatham House in London and immediate past Chairman of Public Health England.

“As we work together to strengthen national and international health systems, we also need to develop our own capabilities as leaders operating in a fast-moving political and epidemiological environment.

This Executive Programme at the School, in partnership with the Centre for Global Health Security at Chatham House, enables leaders in health to develop critical knowledge and forge valuable links with fellow participants around the world.”

For a full list of Contributors and Faculty please visit the programme website.

www.lshtm.ac.uk/executive-programmes

Shape health agendas around the world.

“

I have been extremely impressed by the course and its design, using a combination of practical workshops, peer networking and personalised coaching and mentoring

.....

The scenarios and real-life examples used made it easier to understand the concepts being discussed and debated, enabling me to appreciate the variety of approaches used to address global health challenges

.....

Having the opportunity to build up my global networks and to hear the rest of the cohort's experiences of tackling various projects has been the most valuable aspect of the course

”

Join our
influential
network and
transform
health
worldwide

Residential locations:

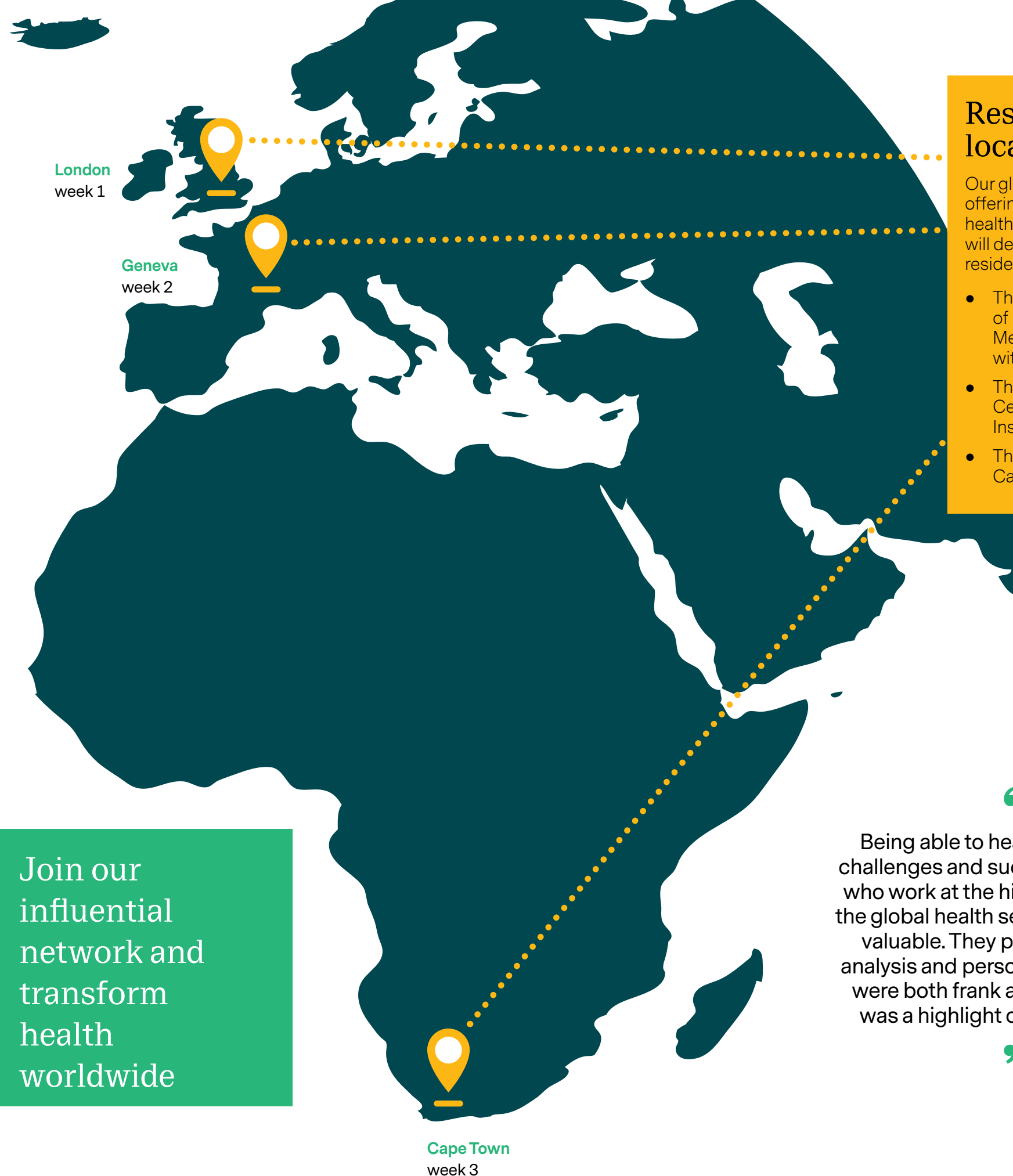
Our global partnerships, offering a vast array of health leadership expertise, will deliver the three residential weeks:

- The London School of Hygiene & Tropical Medicine, in collaboration with Chatham House
- The Global Health Centre at the Graduate Institute Geneva
- The University of Cape Town

“

Being able to hear about both the challenges and successes from those who work at the highest levels within the global health sector was incredibly valuable. They provided in-depth analysis and personal reflections that were both frank and insightful. This was a highlight of the programme

”



Is this
Programme
the ideal
opportunity
for you?

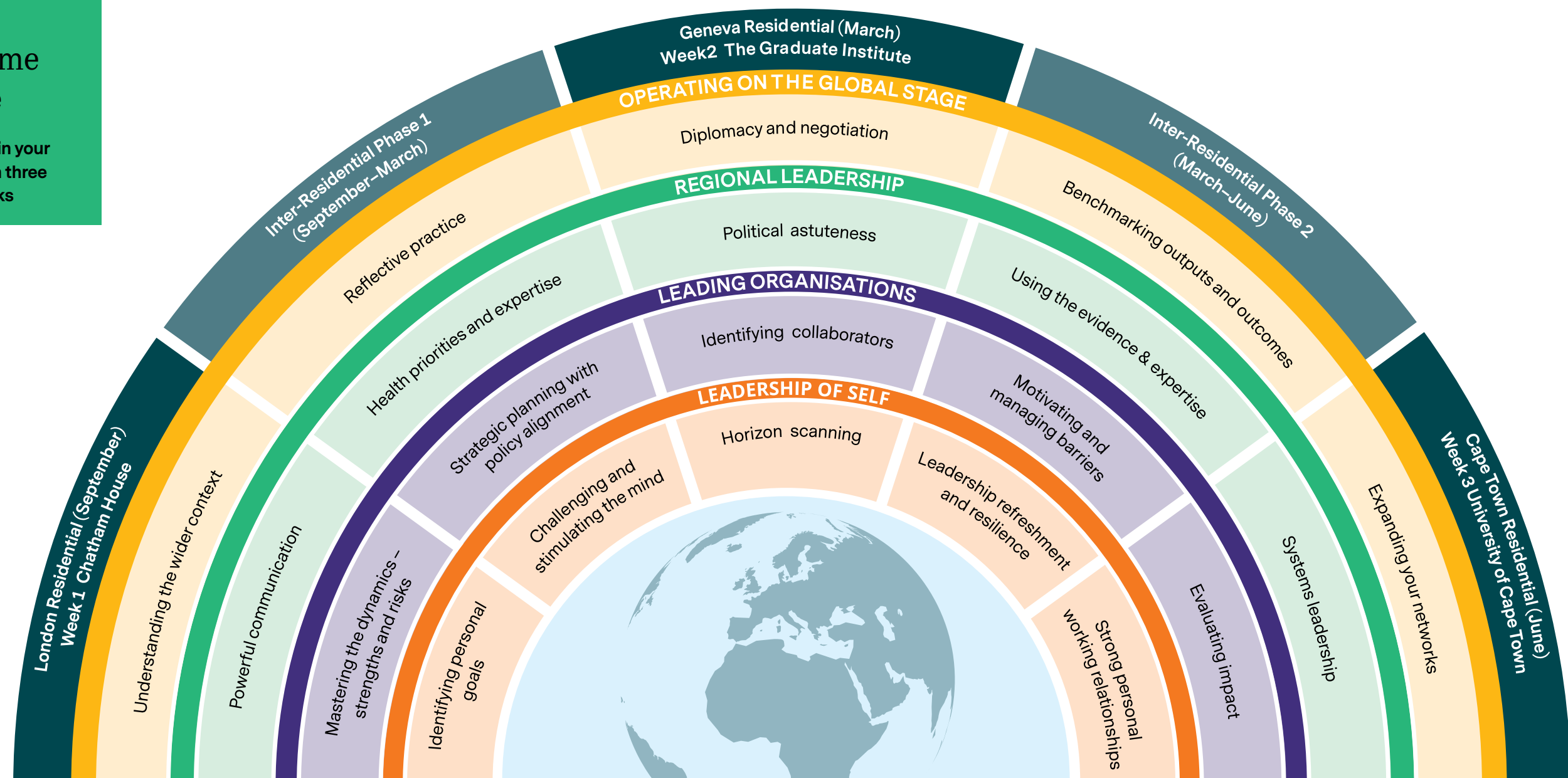
- Are you a senior health leader who cares passionately about improving health and wellbeing?
- Do you want to improve your success in:
 - Convincing policy makers and budget holders of the significance of specific health issues, the effectiveness of solutions, and of the need and ability to act?
 - Identifying local and international partners?
 - Enthusing others to follow your lead and direction?
 - Maintaining momentum and resilience among people with different priorities?
 - Developing and delivering effective strategies in our rapidly changing environment?
- Do you want to close the loop between identifying a problem and achieving an effective solution?
- Do you want to be part of a network of like-minded people which is having an impact on health globally?

Supporting
you to negotiate
a better future

- The aim of the Executive Programme is to support countries to negotiate a better future
- Executive Programme Fellows will form new insights about themselves, their teams and their organisations through bespoke support:
 - Accelerated programmes for policy and project development, gaining from insights and expertise
 - Leader incubation with Executive Coaching, ensuring personal resilience and impact
- Executive Programme Fellows will benefit from a vast array of expertise in health, and will join the School's influential global network to transform health and wellbeing for their populations

Programme structure

10 months within your workplace, with three residential weeks



20,000 alumni
across 180
countries
...and counting

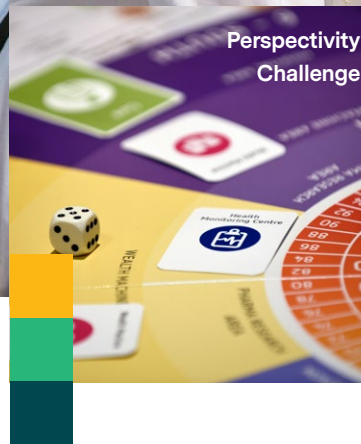


Lifelong benefits

- Access to the London School of Hygiene & Tropical Medicine online events and programmes
- Membership to the School alumni network of 20,000 alumni mapped across 180 countries
- Executive Fellows will be provided with lifelong membership to a prestigious global network of health leaders

- The programme is designed for motivated senior health leaders who want to:
 - Challenge assumptions and re-prioritise in a changing, politically globalised world
 - Scan the horizon to recognise threats and seize important opportunities
 - Nurture advanced leadership, negotiation, and diplomacy skills
 - Join a network of informed leaders, linked through the School and its partners, each with the capacity to influence and empower others

Profile of participating Fellows



Four world-leading institutions, one world-class programme



The London School of Hygiene & Tropical Medicine is a world-leading centre for research and postgraduate education in public and global health. It is one of the highest-rated research institutions in the UK. The School has an international reputation addressing contemporary and future critical health challenges.



The Centre on Global Health Security at Chatham House is working in partnership to host The London Residential Week. The Centre examines key global health challenges and how they manifest themselves as foreign policy and international affairs problems.



The Global Health Centre at The Graduate Institute of International and Development Studies offers Executive Education, research and higher education dedicated to the study of world affairs, with a particular emphasis on the cross-cutting fields of international relations and development issues.



The University of Cape Town is Africa's top research-led university. It is home to a large number of world-ranked researchers, and is renowned for its teaching and learning excellence, as well as for its commitment to engaging with society's challenges through research and active citizenship.

We thank the Bill and Melinda Gates Foundation for its contribution, ensuring a global representation of health leaders participating as Executive Programme Fellows.

Take the
next step:

[www.lshtm.ac.uk/
executive-programmes](http://www.lshtm.ac.uk/executive-programmes)