

The London School of Hygiene & Tropical Medicine (LSHTM) has an internationally excellent reputation in public health and tropical medicine and is a leading postgraduate medical institution in Europe. It is a major national and international focus of collaboration in teaching and research, where clinical, population, laboratory and social sciences are integrated to address the broad issues of health. Associated with the School as a teaching hospital is the Hospital for Tropical Diseases.

Courses take place in the Keppel Street building, which is situated in the heart of London, in Bloomsbury, between the City (London's financial quarter) and the busy West End, with its unparalleled shopping and entertainment facilities. There is easy access to the rest of central London and its many places of interest.

### Course Organisers

**Pablo Perel and Katharine Ker**

Tel: +44 (0) 20 7958 8120 or +44 (0) 20 7958 8135

Email: Pablo.Perel@lshtm.ac.uk or katharine.ker@lshtm.ac.uk

### Applications

Application forms and further details of other short courses offered by the School can be obtained from:

### Registry

**London School of Hygiene & Tropical Medicine  
Keppel Street  
London WC1E 7HT  
UNITED KINGDOM**

Telephone: +44 (0)20 7299 4648

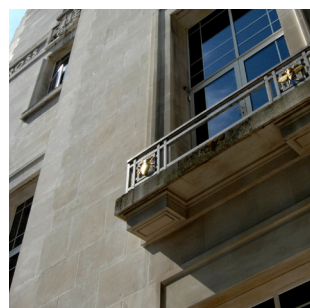
Fax: +44 (0)20 7323 0638

Email: [shortcourses@lshtm.ac.uk](mailto:shortcourses@lshtm.ac.uk)

Website: [www.lshtm.ac.uk](http://www.lshtm.ac.uk)



**LONDON  
SCHOOL of  
HYGIENE  
& TROPICAL  
MEDICINE**



## SYSTEMATIC REVIEWS AND META-ANALYSES OF HEALTH RESEARCH

5 - 9 September 2011

### Short course

The Mission of the London School of Hygiene & Tropical Medicine is to contribute to the improvement of health worldwide through the pursuit of excellence in research, postgraduate teaching and advanced training in national and international public health and tropical medicine, and through informing policy and practice in these areas.

# SYSTEMATIC REVIEWS AND META-ANALYSES OF HEALTH RESEARCH

FURTHER INFORMATION: [www.lshtm.ac.uk/prospectus/short](http://www.lshtm.ac.uk/prospectus/short)

---

## The Course

The increasing amount of research information produced each year makes it impossible for users of health research to evaluate and keep up-to-date with the new evidence. Consequently systematic reviews have a vital role in providing reliable syntheses of research for evidence-based decision-making.

This five day course will provide participants with a basis in the design, analysis and interpretation of systematic reviews and meta-analyses of health research. Participants will be given grounding in all aspects involved in conducting a systematic review and meta-analysis, and will have the opportunity to gain practical experience of the tasks involved. By the end of the course participants will be equipped with the necessary skills to conduct their own high quality systematic reviews and meta-analyses of health research.

At the end of the course the participants should be able to:

- Describe the principles of systematic reviews
- Interpret the results of systematic reviews
- Critically appraise existing systematic reviews
- Conduct their own high quality systematic reviews and meta-analyses

In 2011 the course will run from the 5th to 9th of September.

## Course Content

- Introduction to and rationale of systematic reviews and meta-analyses of health research
- Question formulation and protocol development
- Planning and performing searches
- Critical appraisal
- Introduction to statistical methods for meta-analysis
- Introduction to software for meta-analysis
- Publication and reporting bias
- Systematic reviews of complex interventions
- Systematic reviews in context

## Who Should Apply?

Healthcare researchers including clinicians, nurses, epidemiologists and public health practitioners, who are interested in learning the key concepts involved in the design and production of high quality systematic reviews. It will be assumed that participants will have no prior experience of conducting systematic reviews, however will have a basic understanding of statistics and epidemiological study designs. Participants should also have a good command of English

## Teaching Methods and Course Materials

The course will be run by researchers who have extensive knowledge and experience in the conduct of high quality systematic reviews in a variety of health disciplines.

The course will involve lectures and participatory practical sessions. A course manual will be given to participants at the beginning of the week.

Sessions will run from 9.00 to 17.00 each day.

## Methods of Assessment

There will be no formal examination. A Certificate of Attendance will be awarded to all completing the course.

## Course Fee

The total course fee is £1195, which covers participation in the course, materials, incidental tea/coffee, welcome reception on Monday evening and lunch on Friday. If the course fee is to be paid on the applicant's behalf, please send a letter from the sponsor to confirm this as soon as possible. Otherwise, the applicant will be held personally responsible for payment. Fees are payable in full by 29th July 2011.

## Accommodation

The School cannot provide accommodation for participants. A list of hotels and other accommodation located in the vicinity of the School can be provided on request to Registry.