

LONDON SCHOOL of HYGIENE & TROPICAL MEDICINE



LIBRARY & ARCHIVES SERVICE

London School of Hygiene & Tropical Medicine
Keppel Street
London
WC1E 7HT

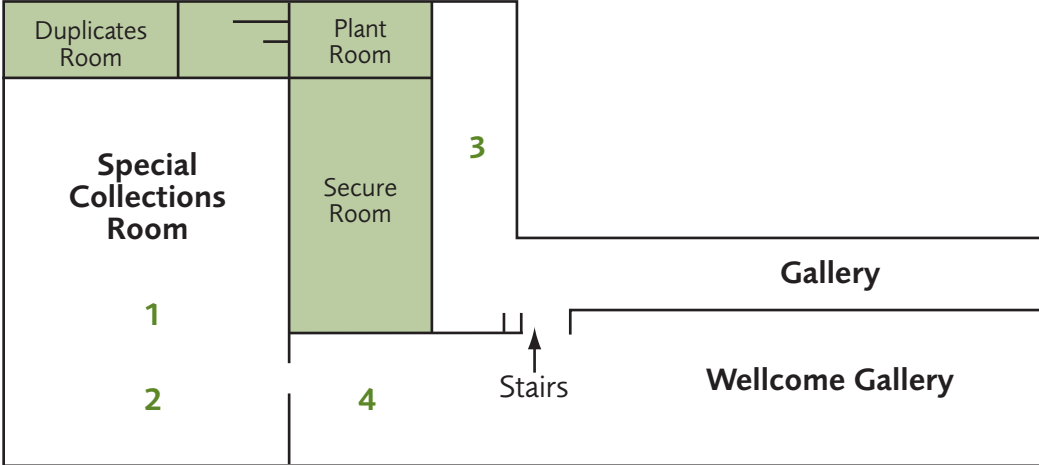
Telephone: +44 (0)20 7927 2276
Fax: +44 (0)20 7927 2273
Email: library@lshtm.ac.uk

Find us online at
www.lshtm.ac.uk/library/

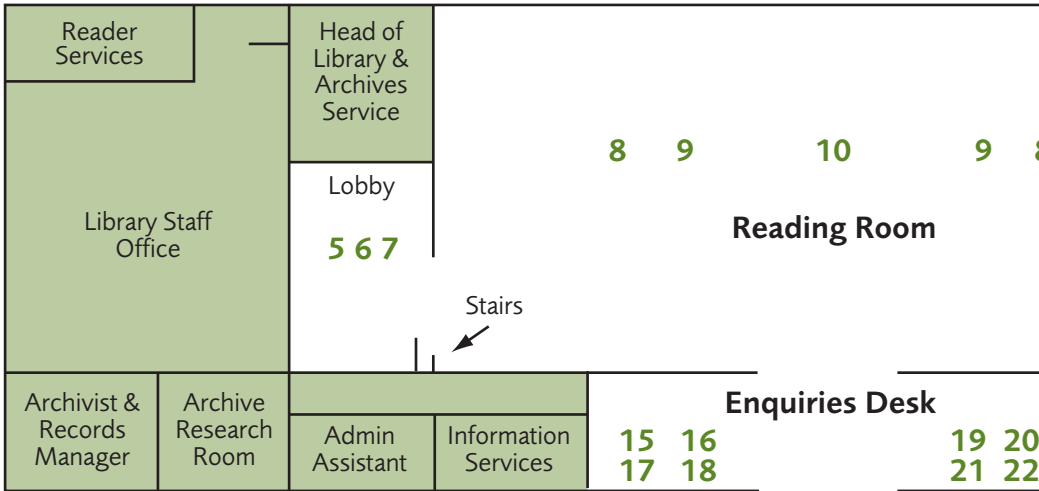
Stay up to date with breaking
news by following our blog at
<http://lshtmlib.blogspot.com>
or follow us on Twitter at
[@LSHTMlibrary](https://twitter.com/LSHTMlibrary) or
[@LSHTMarchives](https://twitter.com/LSHTMarchives).

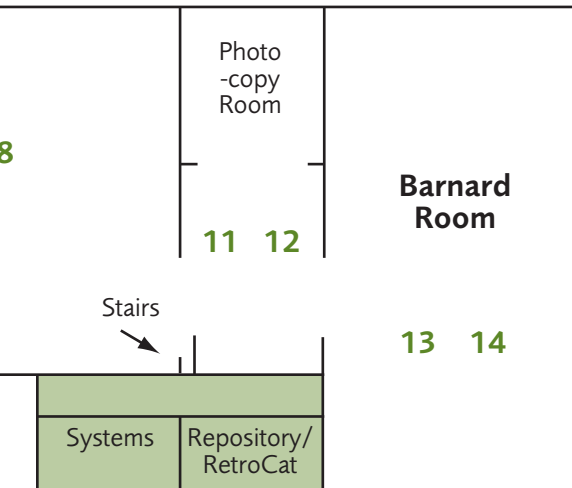
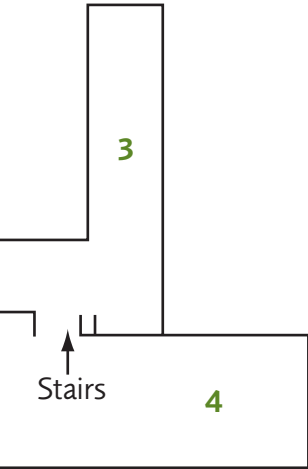
Plan of the Library

Upstairs



Downstairs





- 1 Report Series Collection
- 2 Pamphlet Collection (1970 onwards)
- 3 Books (1990 - 2004)
- 4 Print Journals (1995 - 2009)
- 5 Microfilm & Microfiche Reader
- 6 DVD & Video Reader
- 7 Printers
- 8 PC Carrels
- 9 Study Desks
- 10 Print Journals (2010 onwards)
- 11 Photocopiers
- 12 Abstract & Indexing Journals
- 13 Study Carrels
- 14 Books (2005 onwards)
- 15 BookSwap
- 16 Printed Catalogue
- 17 Quick Reference Collection
- 18 Online Catalogue
- 19 Reference Collection
- 20 Audio Visual Collection
- 21 Overnight Loan Collection
- 22 Theses & Project Report Collection

Opening Hours 2011 – 2012

Term Time

Autumn term:	26 September 2011 - 18 December 2011
Spring term:	09 January 2012 - 25 March 2012
Summer term:	16 April 2012 - 24 June 2012

	Staff & Students	Visitors & Alumni
Monday - Friday	08.30 - 23.00	08.30 - 20.25
Saturday	09.00 - 20.00	09.00 - 12.30
Sunday	11.00 - 20.00	No access

Summer

25 June 2012 - 14 September 2012

	Staff & Students	Visitors & Alumni
Monday - Friday	08.30 - 20.25	08.30 - 20.25
Saturday	09.00 - 17.00	09.00 - 12.30
Sunday	Closed	Closed

Vacations

Christmas Vacation:	17 December 2011 - 08 January 2012
Easter Vacation:	24 March 2012 - 15 April 2012
Summer Vacation:	15 September 2012 - 23 September 2012

Monday - Friday	08.30 - 20.25
Saturday	09.00 - 12.30
Sunday	Closed

Archives

Access to the archives is by appointment only, available Monday to Friday 10.00 - 16.30. Contact the Archivist (tel: +44 (0)20 7927 2966, archives@lshtm.ac.uk) to make an appointment.

Closures

The School will be closed on 23 December 2011 - 03 January 2012 (inclusive) and 06 - 10 April 2012 (inclusive).

There are occasional changes to the standard opening hours for special events in the School and around national holidays. Please check details on the Library website before travelling.